

# MEGHALAYA COMMUNITY LED LANDSCAPE MANAGEMENT PROJECT

---

ENVIRONMENTAL MANAGEMENT FRAMEWORK  
(EXECUTIVE SUMMARY) KHASI VERSION

FINAL

| OCTOBER 2017

## KA PASOH (Executive Summary)

Ka Sorkar Meghalaya ka la pynkhreh ban thaw ia ka Meghalaya Community Led Landscape Management Project (CLLMP) ka ban pyntreikam da ka Meghalaya Basin Management Agency (MBMA). Kane ka projek ka don ka jingthmu ban pynkhlain ia ka jingpeit bad sumar ia ka spah mariang da ki nongshong Shnong ha ki jaka ba lah jied hapoh 11 tylli ki distrik jong ka jylla Meghalaya. Ia kane yn ioh lyngba ka rukom thaw lad thaw buit bapher bapher, ka jingai jinghikai ban kham pyntbit, bad ka jingwadbniah ban sdang naduh tynrai khnang ban kyntiew ia ka jingpynneh pynsah, ka jingpyneh ia ki jingdon jingem jong ka spah mariang, ka jingiatrei bad jingiashimbynta lang jong ki nonshong Shnong; ban kyntiew ia ki jingtip tynrai, ban pyni iaka jingdon jong ki spah mariang; ban pynkhlain shuh shuh ia ki Dorbar shnong bad ban pyniadei bad kino kino ki bank. Kajingwan jong kane ka projek ka kynthup naduh ka jingthaw buit halor kumno ban pynkhlain ia ka jingpeit bad sumar ia ka spah mariang da ki nongshong shnong kaban kynthup (i) Ki lad ki lynti halor kumno ban pynneh pynsah ia ka khyndew ka shyiap bad ka um; (ii) Ki lad ki lynti halor kumno ban pynthymmai biang iaka jaka ba lah sah shrah lyngba ka jingpynmadan ia ka khyndew, ban shna kynton ha ki jaka ba long lum, ban sei noh iaka khyndew ba hap hapoh ka pung shnong, ban kynroh khyndew bad kiwei kiwei.; (iii) ban peit bad sumar ia ka um ka wah, ban thaw ia ki lad ki lynti halor kumno ban kyntiew bad sumar sukher ia ki umpohliaw khnang ban pynduna iaka jingtuid um; (iv) ka jingthung dieng bad ban ka jingpynkhie im biang ia ki khlaw ki btap bad, (v) Ka jingpynbha biang ia ki jaka ba lah shah ktah na ka jingrep shyrti bad na ka jingtih ia ki mar poh khyndew.

Watla ia kane ka projek yn pyntrei ha ki jaka ba kham i donkam( sensitive area), kaba don shibun ki jait bad kynja syntiew bad kumjuh ruh ki jingthung ba long dawai, ia kane ka projek la pynwandur ha kata ka rukom ba kan wanrah jingbha ia ka mariang baroh kawei.. Ym don kano kano ka jingkhmih lynti ba kajingthawbuit halor ka projek kan pynmih shibun ki jingpyrshah, ki jingktah ba iaineh halor ka mariang, hynrei ka projek kan trei ban pynkylla bad pynduna ia ki jingeh ha kaba iadei bad ka jingpyndonkam ia ka khyndew ka shyiap, khnang ba ki jingktah kin ym long kiba iai neh, bad ban pynkhie im pat ia ki jingmih ba mih naka mei mariang. Ha kaba iadei bad ka jingthmu jong ka projek (Project Development Objective), kane ka projek kanialeh ban pynduna iaka jingpynjulor ia ki khlaw ki btap bad kumjuh ruh ia ki tyllong um kiba don hapoh ka jylla Meghalaya. Ia kane yn ioh lyngba ka jingthaw buit ba kham biang ban thung ia ki dieng ki siej ha ki jaka ba kham iahap, ka jingpeit bad sumar kaba long iaineh ia ki jaka shong jaka ha ka maraing kiba kham i donkam(sensitive)kum ki law kyntang, ka jing peit bad sumar ba iaineh ia ki khlaw shnong, ia ki umpohliaw bad iaka um ka wah.Lyngba ka jingiatreilang bad kiwei kiwei ki lad jingiarap (Schemes), ka projek kan lah ban pynmih bad kyntiew ia ki lad bad rukom rep ki ban iahap bad ka jinglongka mariang, ban thaw iaki kor ki bor ki ban pynkhie im ia ki jingmih ha ki khyndew ki shyiapkaba don ruh ka jingthmu ban pynlong sbob biang iaka khyndew, bad ban aiki lad jingiarap ha kito ki por bym pyndonkam iaka khyndew(fallow periods) bad ban kham pynbhaiaka rukom rep shyrti khnang ban pynduna ia ka jingiaibteng ban pynjulor ia ki khlaw ki btap.Ka projek lyngba ki kor ki bor jong ka EMF kan ai ruh ki lad ki lynti ia ka Shnong ba kan lah ban tehlakam ia ka jingthang ding ha ki khlaw ki btap bad ban wad ki lad ki lynti halor kumno ban siew ia ki brierw kiba peit bad sumar ia ka mei mariang(explore systems for payment for ecosystem services) khnang ban pynneh pynsah iaka jinglong khlaw ka jaka, ia ki jaka ba lah hiar pateng naduh ki longshwa manshwa bad kumjuh ruh ia ki tyllong um kiba don ha ki jaka. Yn nym don jingiarap nakaliang ka projek halor ki jingtrei ba iadei bad ki surok

(Feeder roads) bad jingkieng. Ka projek kan nym kyrshan ia kino kino ki jait kam ha kaba iadei bad ki khlaw sorkar ne ki jaka ba donkam jingiada ba la jied da ka sorkar.

La bynshet ha ka projek ia ki kam kiba hap hapoh ka Category B – Partial Assessment ha kaba iadei bad ka mariang. Kane ka mut ba kito ki jingktah pyrshah iaka mariang ki ba kham bun ne ki bym lah ban pynkylla yn nym don ka jingkhmih lynti n aka kam ban ioh jingiarap pisa hapoh kane ka projek. Ki ain ki kanun halor ka jingiada iaka mei mariang kin hap hapoh ka Environmental Assessment - OP/BP 4.01, Natural Habitats - OP/BP 4.04, Forests - OP/BP 4.36, bad Physical Cultural Resources - OP/BP 4.11. Ka projek kan don lai tylli ki Component (1) Ban pynkhlain ia ka jingtip bad jingbit jong ki briew halor ka jingpyntreikam ia ki jingdon jingem jong ka mei mariang. (2) Ban thawbuit bad ai jingiarap. (2A) Ka jingthawbuit ban pyndonkam iaka khyndew khnang ba ki jingdon jingem kin long kiba iai neh (2B) Ka jingai jingiarap na ka bynta ki kam ba iadei bad ka jingpyntreikam ia ki jingdon jingem (3) Ka jingpyniaid bad pyntrei kam ia ka projek. Namar ba kane kan long ka projek kaba iar ha ka jylla, ia ka Component 1 yn pyntreikam ha baroh sawdong ki jaka jong ka jylla ka ban iarap iaka CLLM-Programme jong ka Sorkar Meghalaya. Ia ka Component 2 yn pyntreikam tang ha katno katne ki Shnong hapoh ka jylla khnang ban pynmih nuksa halor ka jingpeit bad sumar i aka sla khyndew. Ka Component 3 jong ka CLLMP- Project pat kan iarap ban kyrshan ia ka CLLM-Programme tang ha kito ki jaka ba kham donkam jingiarap (financial management), ban buddien bad ban pynshongdor iaka kam(monitoring and evaluation), ban sdang ki lad jingiada naka bynta ka imlang sahlng bad ia ka mariang.

La pynlong ia ka jingpeit bad jurip bniah halor ka jinglong ka mariang khnang ban ioh ban bishar bniah iaka jinglong jong ka jaka ha ka jylla bad ban sngewthuh shai halor ka jinglong jingman jong ka mei mariang kumba ka long mynta hapoh ka jylla Meghalaya. Haba shim kyllum ia kane ka jingpeit bad jurip bniah halor ka mariang ka pyni shibun ki mat ba kongsan ha kaba iadei bad ka mariang kum (i) ka jingpynjulor ia ki khlaw ki btap namar ka jingpom pathar ia ki dieng tylli bad ki dieng thang bad kumjuh na ka jingthang rnga, ka jingduhnong bakhraw ha kito ki por bym donkam ha ka por ba rep shyrti. Ka jingbymlah ban tehakam iaka jingthang dingia ki khlaw kan pynduh noh ia ki jingthung ba dang lung kiba thmu ban wanrah jingbha biang na kane ka jingjulor. Ki tyllong um hapoh ka jylla ki lah don jingma na ka jingshah pynjaboh, naka jingdap khyndew ne shyiap bad na ka jingjaboh ba wan na ka jingtih ia ki mar poh khyndew bad kumjuh ruh na ki jaboh ba wan naki iing ba don ha ki thain sor. Ka Meghalaya kaba dei ka jylla jong ka rep ka riang ka don kumba 2 bynta naka 3 (2/3<sup>rd</sup>)ka jingbun ki briew, kiba shaniah beit ha ki tyllong um ba lah don lypa ha ka jylla, hynrei ha bun ki khep pat ym da don bun ki ba pyndonkam ban ri jingri bad thung jingthung lang hajuh(integrated farming practises), hynrei watla kata ruh ka jylla Meghalaya ka don shibun ki rukom rep tynrai khlem da pyndonkam dawai (organic) bad yn don ka jingiarap halor kinena ka liang ka projek. Ki umpohliw ki long ki tyllong um ba kongsan kiba ai um ia ki jingthung jingtep bad kumjuh ruh iaka jingdonkam ha iing ha sem. Na ka jingjurip ba la pynlong da ka Meghalaya Institute of Natural Resources (2015) ha ka ba na ka 714 tylli ki umpohliw ba lah jurip kumba marshiteng na kine ki lah sdang ban ryngad bad jah noh. Ka daw ba kongsan halor kane ka jingryngad noh ki umpohliw ka dei na ka jingkylla ha ka rukom pyndonkam iaka jaka, ka jingpom dieng pathar, ka jingtih maw tih shyiap bad mar poh khyndew bad kumjuh ruh naka jingkylla ka mei mariang. Watla kumba 77 na ka shispah ki jaka ha ka jylla ki hap hapoh ki jaka khlaw, kham bun na ki bynta jong khlaw ki long ki bym da rben ka jinglong khlaw. Kawei pat ka mat ba kongsan ka dei ka jinglong lyngkhot ki jaka shong jaka sah ha ki khlaw ki btap, khamtam eh ia ki jaka kiba don ha 'law kyntang kiba la nang rit namar ka jingpynjulor noh ia ki, ka jingwan tylllep da ki jait jingthung ne jingri ba na bar, naka jingsharai ia ki jingri, ka jingpyndonkam ka bym long iaineh ia ki jingmih naka mariang

(unsustainable resource extraction), bad ka jingkylla ha ka rukom pynneh pynsah ia ka mariang da ki jingtip tynrai. Ka jingtih ia ki marpoh khyndew ka ktah shibun ia ka kyndew ka shyiap bad ki tyllong um kaba pynjaboh iaka um, ka Iyer bad iaka khyndew.

Iaka jingbishar bniah ban pynshongdor halor ka mariang (environment assessment study) la shimti da ka Meghalaya Institute of Governance naka bynta ka projek ba la tyrwa. Ka jingthmu jong kane ka jingwad bniah ka long ban sngewthuh shai halor ka jinglong jingman jong ka mariang, ia ki ain ki kanun bad ki kyndontreikam ha kaba iadei bad ka mariang baroh kawei. Ki lad bad rukom wadbniah ba lah jied naka bynta kane jingbishar bniah ki kynthup iaka jinglum jingtip na ki kot bad na ki jingtip ba lah don lypa; ki kot halor ka ain bad ka rukom pyniaid bad bud ia ki kyndon; ka jingiaphylliew jingmut bad ki briew ba ioh jingmyntoi lyngba ka jingiamir jingmut lang bad ki ki tnad Sorkar, ki seng bapher bapher, ki 'riew dkhot naka Dorbar Shnong. Shuh shuh, la pynlong ia ka Workshopha ki thain Northeast halor kaNational Forest Policy ha u bnai Naitung 2016, ban ioh ia ki jingtip halor kumno ban peit bad sumar iaka khlaw, ka jingpyndonkam ia ki jingthung barit ba ria napoh ki khlaw(Non Timber Forest Products)bad ka jingrep shyrti ha kaba la shim khia halor ki jingai jingmut ha ka ban peit bad sumar bha ia ki khlaw ki btap

La jied kumba lai tylli ki Shnong ban leit jurip, ban ioh ia mir jingmut bad bad wadbniah; ka Shnong Nongkhlaw (Khasi Hills), ka Shnong Sohkympor (Jaintia Hills) badka Shnong Rombagre (Garo Hills) kiba pyni shibun ki jingeh kiba iadei bad ka mei mariang ha ka jylla Meghalaya; kum ka jingpynulor ia ki khlaw bad ki wah, ka jingtih dewiong ka bym iahap katkum ka juk mynta kaba ktah ia ki jaka rep, ki tyllong um bam um dih, ki wah/ wahduid, ka jingduh noh ia ki jingthaw ba im ha um; bad ka rukom rep shyrti kaba ktah ia ka khyndew ka shyiap bad ka um. Hashwa ban pyndep iaka EMF, la pynlong ia ka Workshop shaphang ka EMF ha ki thain Garo, thain Jaintia bad thain Khasi & Ri-Bhoi. Lai tylli ki Regional Level Community Consultation Workshop halor ka Community Led Landscape Management Project (CLLMP) lah pynlong da ka Meghalaya Basin Development Authority ha ka 28, 29 bad 30 tarik u bnai Lber, 2017 ha ka SMELC building (kaba don ha Garo hills), DC Conference hall ( ha Jaintia Hills) bad ha Meghalaya Agriculture Management and Extension Training Institute (MAMETI) (ha Khasi Hills & Ri-Bhoi) la la ka jong. Kane ka don ki nongiashim bynta na ki tnad treikam bapher bapher kum ka Agriculture, Horticulture, Forestry, Veterinary, Animal husbandry, Soil and Water Conservation, Industry, Fishery and Water resources, Block Development Officers, Ki seng bapher bapher, Ki kynhun ba pyndonkam i aka um, ki Rangbah Shnong na ki shnong bapher bapher bad ki nongtrei na IBDLP. KI mat ba mih na kane ka jingiasyllok lang ki long kumne harum(i) **Ki khlaw ki btap**:Ka jingthung dieng da ki briew bad ki tnad sorkar ban pynkhie im biang ia ki khlaw ki btap hynrei haba pynshongdor iaka jinglait im jong ki symbai jingthung ka long kaba duna namar ka jingbym biang ka jingpeit bad sumar bha ia ki bad kumjuh ruh na ka jingthang khlaw. (ii) **Ka um**:Ka Meghalaya ka dei ka jylla ba ioh shibun ka um slaphynrei ka jingpynlang bad buh um kam pat biang satia ha ka jylla jong ngi bad kumta ki mih ki jingeh kum ka jingkyrduh um. (iii) **Ka khyndew ka shyiap**:Donkam ban wad ki lad ki lynti ban kham pynbha iaka jingrep shyrti khnang ban ioh biang ia ka khyndew ba sboh bad ba seisoh. (iv) **Ki jingthaw kiba im(Biodiversity)**:Donkam ban ai jingtip halor kumno ban iada ia ki jingthung jingtep bad kumjuh ruh ia ki mrad ki mreng. Ka jingkiar ban pyndonkam ia ki jingthung bad symbai na ri nongwei ki bym lah ban im ha ka jylla jong ngi bad ban pynshlur iaka jingpyndonkam da ki jaid symbai ba don ha ri lajong.

Ym pat tip ia ka jingmangtyngka na ka bynta ki jaka ba lah jied halor ka projek (site-specific investments), ki Shnong, bad ka por ban pyntreikam (scale of interventions)hapoh kine ki jaka ba lah

jied(targeted landscapes) , hynrei ia kine yn peit ha ka por ba pyntreikam iaka projek. Namarkata, la thaw ia ka Environmental Management Framework ban ialam lynti ia ki Shnong ban thaw ia ka Community Natural Resource Management Plan, khnang ba baroh ki jingpyntreikam kin long kiba iadei bad ka mariang bad kiba iaineh. Ia ka EMF la pyni paidbah ha ka MBDA webpages,(<http://www.mbda.gov.in/publication/index.html>). Kan don ruh ka kot jingtip halor ki kyndon treikam kaba la tip kyrteng kum ka Community Operations Manual, ka ban pyni ia ki lad ki rukomhalor ka jingthung dieng, thung jingthung, ki kam ba iadei bad ka jingpynneh pynsah ia ka khyndew ka umbad ka jingpeit bad sumar ia ki umpohliew.Kane ka jingtip ba kham bniah kan iarap ruh ban thaw buit halor ka rukom pyndonkam iaka jaka bad kiwei kiwei ki jait kam ka ban kyrshan hapoh projek. Yn pynlong iaka jingai jinghikai halor ka jingpyntbit ia ki nongtrei lyngba ki jingai jinghikai ba naduh ki kyrndan ba halor(national level) bad ka kynrdan ba ha trai duh (decentralized level), khnang ban ioh ia ka jingpyntreikam kaba biangbad kaba iahap bad ki ain ki kanun jong ka World Bank (safeguards policies).

Ka EMF ka kynthup ia ki lad bad rukomkum (i) ka jinglum ia ki jingtip ha kaba iadei bad ka projek halor ka jinglong jingman ba kham kongsan jong ka khyndew ha ka mariang , bad ki jingma/ jingeh kiba kynduh ha ka khyndew ne shyiap(ii) ka jingpeitbniah ia ki kam ba iadei bad ka mariang pyrshah ia kitokiba lah ban pynsniew ia ka mariang(negative list)(kine ki jait kam kin nym ioh jingiarap na ka projek); bad (iii) ka jindonkam ban mynjur ia ki kyndon ba lah buh, (lada don). Ka EMF ka batai shai ia ki jingma halor ka mariang (bad kumjuh ruh ia ki jingmyntoi) ha kaba iadei bad ka projek, ryngkat bad ki lad jingiarap kiba lah ai jingmut naka bynta ki jingktah ba laiohi lypa ba lah thoh ha ka Lynnong 5. Kham palat ia kane pat, ha kaba iadei bad ki jingkdew halor ki kam/ jingpyntreikamkiba lah jied, ki nongshong Shnong, ka jingpyndonkam da ka jingpeitbniah (Screening format) kan pynithuh ia ki jingktah halor ka mariang bad kan pyni ruh ia ki jingktah kiba pynbha lane pynsniew ia kawei pa kawei ka jait kam.

Watla ia kane ka projek la khmih lynti ba kan wanrah jingbha ia ka mariang baroh kawei, ka don pat ka jingsngew ba ki jingtrei bad ki jait kam ba iadei bad ka projek kin wanrah khyndiat khyndiat ki jingktah ba pynsniew, lada ym pyntreikam bha ia ki, ym da peitbniah ia ki bad lada ym pat ai lane pynsaphriang ia ki kyndon ba iadei bad ka mariang. Ki mat halor ka jingpynneh pynsah iaka mariang ha kaba iadei bad ka projek kin kynthup(i) ka jingdonkam ban peit bad sumar iaka jinglait im jong ki jingthung jingtep namar kum ba lah iohi mynta ka jinglait im jong ki lah nang hiar nang hiar (ii) ban jied bha ia ki jait dieng bapher bapher khnang ban ym don ka jingbuh bujli ia ki jait jingthung kiba na ri nongwei ha ki khlaw (iii) ban peitbha ia ki kam ba ki nongshong Shnong ki trei ha ki khlaw (forestry) bad ka jingpyndonkam ia kino kino ki jingmih na ki khlaw ba kin long kiba iaineh ha kaba iadei bad ka mei mariang (iv) ka jingiada ba kham biang ha baroh sawdong ki jaka ba don ka umpohliew khnang ban pynneh pynsah iaka jinglong khuid bad suba jong ka um ha ka jakaba ka don bad ka um jakhlia(untreated wastewater),ka jingbym don ki painkahana ba biang lane ka jingpynkylla iaka rukom pyndonkam i aka jaka ki ban wanrah iaka jingpynjulor ia ki tyllong um (vi) Ka jingbym biang ki kam ba iadei bad ka jingiada ia ka jaka(land reclamation activities) kan wanrah ruh ki jingeh ia ki nala um bad ki khyndew, ka ban pyntuid noh ia ki khyndew sha ki nala um bad kumta, kan ktah iaka rukom iaaid ki tyllong um. Ki lad jingiarap naka bynta kawei pa kawei na kine ki jingktah ba lah iohi lypa lah dep ban buh jingthoh na ka bynta ka por ba thaw bad pyntreikam, bad ia kine yn pyndonkam da ki nonshong Shnongha ka por ba donkam.

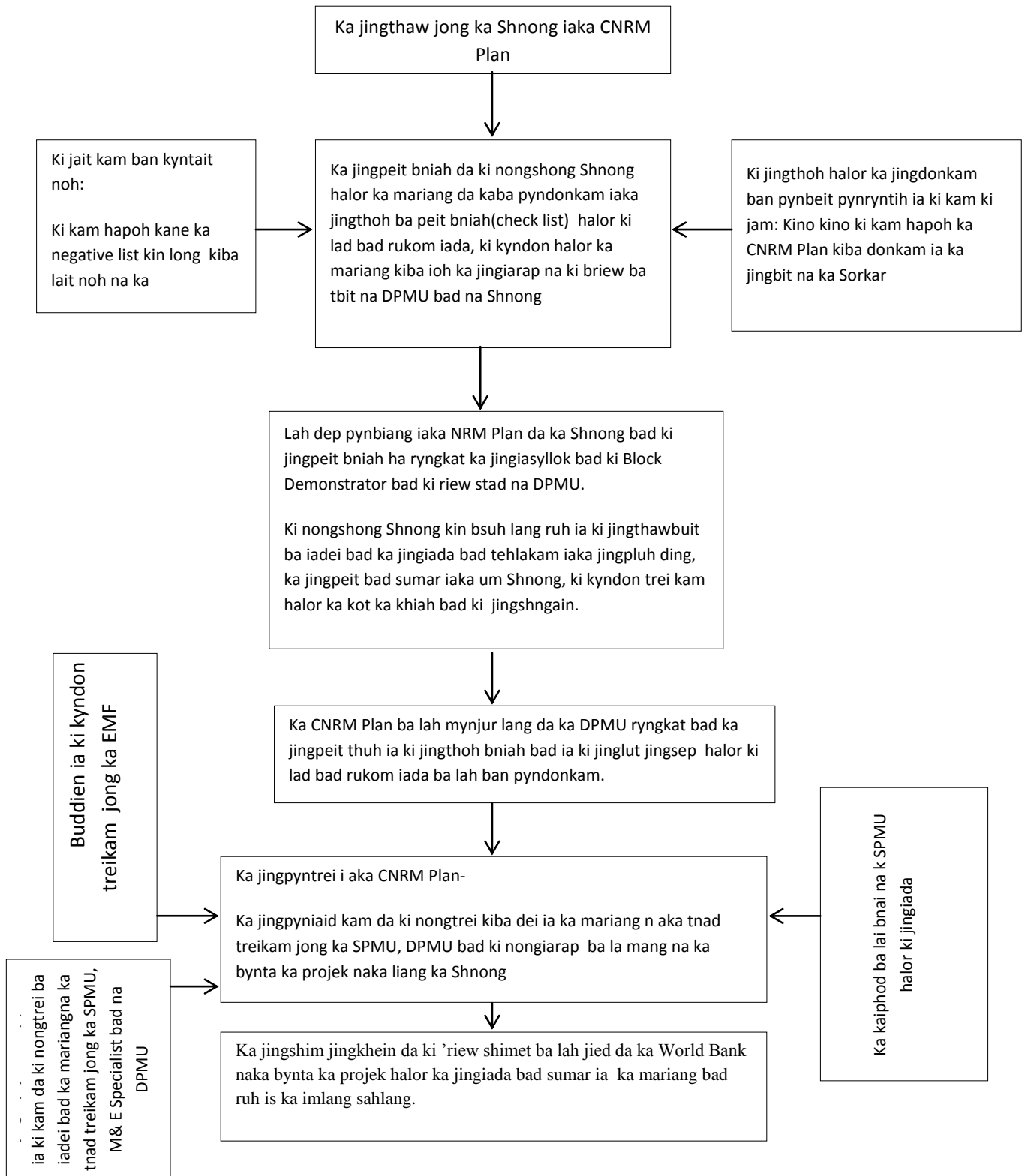
Kin lah ban don ruh ki jingktah ba pynsniew ia ki jaka shong jaka sah namar ka jingbun ki jingsawa bad ki jingpynthut, ka jingbret pathar ia ki jaboh lane ka jingjia pluh ding.Ka jingpynkhie im biang ia iaki khyndew, kaba wanrah jingktah kan long namar(i) ka jingbun ki jait kam ki ba khlem da thaw

buit/pyrkhat bha halor ka Ecotourism ha ki jaka leh niam bad ki jaka ba hiar pateng naduh ki longshwa manshwa, (ii) ka jingdawa ban shna ia ki surok shnong(rural feeder roads) ban die ia ki mar khlaw (NTFP), ki jingri bad ki jingthung jingtep bad kumjuh ruh ki syntiew ki skud ha ki iew, ban pynmih shibun ki lad ki lynti ki ban bsa ia ka iing ka sem; bad (iii) kan don ruh ka jingktah khyndiat khyndiat ia ki nongshong Shnong ba sah sha them lada don ka jingpynroi ne lad jingiarap (Schemes) ban ai um na ki tyllong um ba lah iada bad pynbha.

KaEMF ka kdew ne pyniia ki kyndon treikam ha kaba iadei bad ka mariang(Environmental guidelines)da kaba pynshong nongrim ia ka rukom treikam, kum (i)ka jingsumar ia ki jaka pynlang um ba mih na umpohliaw, bad ka jingpynneh pynsah ia ka um shnong (ii) ka jingpynneh pynsah ia ka khyndew ka shyiap bad ka um (iii) ka jingkyntiew iaka jingthung dieng bad ban pynbun ia ki jingthung jingtep (iv) ka jingpeit bad sumar iaka jingseisoh jong ka khyndew bad (v) ki kam ba iadei bad ka jingri sumar bad jingthung dieng da ki nongshong Shnong/ ka jingrep lang ia ki jingthung jingtep ha ryngkat ka jingthung dieng. Kin don ruh ki jingeh ki ban wan ha ka por ba pyntrei ia ki kam, lada ym sumar bha kin wanrah jingktah ia kamariang, bad halor kane, la thaw ia ka kyndon treikam ha kaba iadei bad ka mariang (Environmental guidelines) na ka bynta (i) ka jingtehlakam iaka jingthang khlaw (ii) Ka jingpeit bad sumar ia ki tyllong ba pynjaboh (iii) ka jingpeit bad sumar ia ki jaka kyntang ki ba rim ba jah lada lap (iv) ka jingpynjyrngam iaka mariang bad ki lad ki lynti halor kumno ban iada bad sumar ia ka (v) ka jingpeit bad sumar ia ki jaka leh niam bad kino kino ki jaka ba lah hiar pateng naduh ki longshwa bad ban shim iaka jingkitkhlieh halor ki kam ba iadei bad ka kam jngoh kai pyrthei ha kaba iadei bad ka mariang(Eco-tourism).Kikyndon treikam ha kaba iadei bad ka mariang (Environmental guidelines) kin long kum ki bynta ba kongsan halor ka kotCommunity Operations Manual, bad ia kine yn pyndonkam ha ka por ba thawbuit bad pyntrei ia ki kam.

Ka jingthmu ba kongsan jong ka EMF ka long ban wanrah iaka thymmei jong ka kam kaba long shai bad sngewthuh halor ka jingpeit bad sumar ia ki jingmih na ka mariang bad kumruh ruh ia ki jingma ha ka por ba pyntrei iaka projek, ban thaw ia ki kyndon kiba ka projek kan hap ban buddien khnang ban ioh ka jingiamynjur lang bad ka World Bank, bad kumjuh ruh ia ki kyndon halor ka mariang kiba lah buh da ka jylla bad ka ri. Ka batai ruh ia ki kam bad ka jingkitkhlieh kaba ki jaka treikamk(institution) kin hap ban leh, bad ka jingdonkam ban mang tyngka khnang ban ioh pyntreikam ia ki lad bad rukom jingiarap ha ka ban iada ia ka mariang .

Ka dur ba la shna halor ka rukom pyntreikam ia ka EMFka long kumne harum:



Ia kane ka Projek yn pyntrei da ka Meghalaya Basin Management Authority (MBMA) ha ryngkat ka jingiatreilang bad kiwei kiwei ki tnad treikam, khamtam, ka SIRD (naka bynta ka jingai jinghikai bad jingpyntbit ha kino kino ki kam), ka tnad treikam na Soil and Water Conservation, Water Resource Department, Forest Department, khamtam eh ban ai jingiarap ia ki nongshong Shnong ban kham pyntbit ha kino kino ki jait kam (technical input), ban ai jingiada bad ban iarap ha ka ban thaw iaka CNRM plan.

Ki nongtrei kiba lah ban aiti lut baniada bad sumar iaka mariang kin don ha ka tnad treikam jong ka State Project Management Unit, ka ban don ia u Projek Manager ba dei peit ia ka mariang, ha ryngkat ka jingiarap da kiProject Associate. Ha ka district level pat lah thung ia ka committee ka ban mynjur iaka jingthawbuit halor ka C-NRM ba lah thaw da ka Shnong, bad ban pyntikna ka jingiatreilang bad kiwei kiwei ki tbad treikam, ka jingiarap ban pyniaid ia ki kam(administrative support) bad ki lad ki lynti ban iada bad pynshngain, ha ryngkat ka jingdon lang u nongtrei ba la mang kyrpang naka bynta ka kam ha kaba iadei bad ka mariang.Ha ka block level pat, ym don u nongtrei ba la mang kyrpang naka bynta ka kam ha kaba idei bad ka mariang, hynrei kin don ki nongtrei ba tbit ki ban iarap ia ka Shnong ki ban pyntrei halor ka jingthawbuit iaka CNRM, ka jingpyniaid kam bad jingpyntreikam ia ka projek.Yn thung ia ka kynhun kumba phra ngut ki nongiarap na shnong ban trei ha ki Shnong ki thaw, kine kin long kiba tbit ban trei ia ka kam ba iadei bad ki khlaw, ka um, ka khyndew, ka jingkhain jingdiah, ban pynsaphriang ia ki jingtip bad jingstad(knowledge management), GIS, ka jingpeit bad sumar ia ka mariang bad ka imlang sahlang ki ban longruh ki nongmihkhamat ha Shnong na kane ka projek(project frontline functionaries) ha ryngkat ka jingtip ba ioh na ka jingthmu jong ka projek, ban don ka bynta kaba kongsan ha kajingiatreilang(principles of participation), ban long ki nong pyniaid iaka pisa(fund flow),bad ban peit bad sumar ia ka mariang bad ka imlang sahlang.

Kane ka projek kan don ka rukom treikam jong ka MIS ha kaba kan peit thuh ia ka jingiaid shakhmat jong ka kam ha kaba iadei bad ka jingai jingiada bad sumar, bad ka jingshim kyllum ia baroh ki jingpyntreikam ia ki kyndon ba iadei bad ka mariang. Kane ka projek kan khmih thuh ia bun jait ki dak ki shin ba iadei bad ka jingiada bad sumar ba kham biang ia ka jaka, kum ka jingtyngkai ia ka khyndew bad ka um bad jingpynroi ha ka liang ki mar poh khyndew. Khamtam na ka ka bynta ka EMF, la thaw ia ki dak ki shin ki ban ban peit thuh man la ka snem. Yn sa thaw ia ka kaiphod halor ka jingpyniaid ia ki kam man la ka shiteng snem bad ka jingiaid shakhmat bad jingeisoh jong ka kam halor ka jingai jingiadaiaaka mariang bad ia kane yn sa phahsha ka World Bank. La tyrwa ba hapoh ka lai bnai, yn pynlong ia ka jingshim jingkhain naka liang kaWorld Bank naka bynta ka projekhalor ka jingiada bad sumar ia ka mariang ban phai khmat sha ka jingpynkhreh bad jingpyntreikam ia ka C-NRM plan, khamtam (i) ka jingiaid shakhmat ha ka jingkhmih thuh ia ki kam ki jam, (ii) ka jingpyndonkam ia ki kyndon treikam jong ka mariang, bad ki lad ki lynti ban pynduna ia ka jing shah ktah ka mariang. (iii) Ka jingpyniaid halor ka jingpynroi ia ka mariang, lada donkam. (iv) ka jingpyndonkam ia ki lad bad rukom tynrai baniada bad sumar ia ka mariang bad hangno ba lah ban kyntiew (v) Ki thup ai jingmut na ka bynta ban kyntiew sha khmat ia ka jingpeit bad sumar ia ka mariang kat kum ka jingkotbor jong ki shnong.

Ia ka jinghikai ba kham bniah ban kyntiew ia ka bor pyrkhath la tyrwa na ka bynta baroh ki nongtrei bad ki nongshong Shnong ba iarap ban peit bad sumar ia ka mariang.Ka jinglut halor ka jingpyntreikam ia ki jingdonkam jong ka EMF ha baroh 5 snem, ka kot haduh 1% na baroh ka jinglut jong ka projek.

---



