

MEGHALAYA BASIN DEVELOPMENT AUTHORITY (MBDA)



INTEGRATED BASIN DEVELOPMENT AND LIVELIHOOD PROMOTION PROGRAMME



Dr. Mukul Sangma

Chief Minister
MEGHALAYA



Office : 0364-2224282
PABX : 2200
Fax : 0364-2227913
(R) 2522752

MESSAGE

The Integrated Basin Development & Livelihood Promotion Programme (IBDLP), the State's own innovative and exclusive flagship programme, is conceptualized to create multi-faceted livelihood opportunities, leveraging upon the abundant natural resources and human resources of the State. It is designed to ensure complete integration of developmental action for creation of sustained livelihood opportunities with the help of a number of mission mode interventions, supplemented by associated facilitative measures.



The State of Meghalaya is fortunate to have been gifted with abundant natural resources – both renewable and non-renewable. However, keeping in view the demands of green and sustainable development, the investment strategy under this programme focuses mostly on the renewable natural resources instead of non-renewable natural resources.

The programme is people-centric and brings about a complete paradigm shift in the development strategy as it veers away from the traditional 'Beneficiary' approach and promotes alliances with 'Entrepreneurs' and 'Development Partners' in taking the State to the higher trajectory of growth, prosperity and well being. It endeavours to focus more on the less developed areas, under privileged sections of society, women and youth, thereby aiming to harness the vast untapped creative potential of our people, and particularly the mass of creative energy exemplified in the vibrant, industrious and expressive youth, who need opportunities for growth and a better and more secure future. The entire programme is pitched on a platform of good governance, wherein the whole process is done transparently.

Multi level impounding of water along the negative spaces (gorges) of numerous river basins visualized under the Programme will enable the people to derive optimum benefits through multi-purpose and multi-stage utilization of water resources. Resultant numerous water bodies along the basins will recharge the

catchment areas, improve the hydrology of the rivers, recharge the ever depleting underground water and will help both in the mitigation and adaptation to climate change.

Perceived lack of opportunities in the rural areas in the absence of appropriate developmental intervention has resulted into uncontrolled rural to urban migration and other vicious cycles associated with lack of hope. IBDLP is further designed to address these issues in totality through creation of sustained employment opportunities across the State.

The focus on complete value chain management of different production sectors coupled with the thrust on thematic and institutional convergence of developmental initiatives will reduce the business risks and also enhance comparative advantage of the State in gaining greater market access.

It is my strong conviction that the Meghalaya Integrated Basin Development and Livelihood Promotion Programme shall pave the way for heralding of a new era of prosperity and inclusive growth. I heartily congratulate the people of the State, the officers of Meghalaya Basin Development Authority and all its partners while embarking upon such an ambitious and path breaking development sojourn. I also hereby dedicate the Meghalaya Integrated Basin Development & Livelihood Promotion Programme and this document to the people of Meghalaya, their well wishers and partners.



MESSAGE

The flagship program of the State, the Integrated Basin Development and Livelihood Promotion Program (IBDLP), has now reached the stage of actual launch on the ground, after considerable efforts in anticipating constraints, difficulties and ground realities, requiring major efforts in forging the necessary linkages and support infrastructure.



The Integrated Basin Development Programme is a new direction in Meghalaya's development paradigm. Aimed at ensuring livelihood security through utilization of basin resources of the State, the Programme is directed at promoting optimum and effective development and inclusive growth in a sustainable framework. It envisages convergence between key implementing departments bringing about synergy, saving time, energy and effort. With its mission mode approach coupled with support of a robust institutional mechanism for implementation, the Programme is geared up to ensure synergy in fund flows, building of institutional partnerships as well as convergence of delivery mechanisms. It also seeks to promote two way communications between government and people resulting in the participatory form of planning, implementation and development. The cornerstone of this effort is conservation, sustainability, market oriented production and entrepreneurship development.

The vision of the IBDLP covers a very wide spectrum of issues relating to sustained development. It has been conceptualized to bring about a positive impact upon the critical aspects of development in the State, especially in the rural sector, with a focus on providing livelihoods to the large majority of the rural population who are either not gainfully employed or are engaged in uneconomical or unproductive activities.

The basic strategies are to strengthen the hands of the majority rural population through an area wise (basin) approach rather than a Department centric approach, building up the necessary platforms for delivery of the required inputs for different productive activities. The program also seeks to expose the stakeholders to practical knowledge which would enable them to exploit proven technology, through the entire value chain, right from the input up to the marketing stage. Proper and sustained use of our water resources and mobilization of required energy support at various stages of the value chain are also the key components of the Program.

It would be inappropriate to consider the IBDLP as the panacea to all the problems which we face, especially in the rural sector. However, I believe that properly implemented, the IBDP would enable the State to improve substantially on most of its growth indicators, and would result in a more equitable and inclusive growth.

The fruition of IBDLP will be seen when all stakeholders work together to achieve its goals. For this to happen there is a need for a meeting of minds to discuss and deliberate on core issues relevant to the successful implementation of this programme. The challenge that lies ahead for all the stake-holders is no doubt a major one, but it is hoped that with a sincerity of purpose and a positive attitude , major successes would be achieved , and a paradigm shift in the development efforts of the State would be brought about.

I take this opportunity to express my deep sense of gratitude to all those who have made untiring efforts to contribute towards conceptualizing and mounting of this very important development initiative and also wish the Programme a grand success.

INTEGRATED BASIN DEVELOPMENT AND LIVELIHOOD PROMOTION PROGRAMME (IBDLP)

CONTENTS

	Page No.
Chapter I Introduction	1
Chapter II Mission, Objectives and Key Interventions	4
Chapter III Strategy	6
(a) Mission Mode Approach	6
(b) Integrated Approach	18
(c) Accompanying Measures	19
Chapter IV Framework of IBDLP	20
1. Knowledge Management	20
2. Natural Resources Management	21
3. Entrepreneurship Development	30
4. Governance	30
Chapter V Convergence under the Programme	32
Chapter VI Key Accompanying Measures	37
✓ Micro-Enterprise	37
✓ Financial Inclusion	39
✓ Markets	41
Chapter VII Development of Institutions	47
1. Meghalaya Institute of Entrepreneurship	47
2. Meghalaya Institute of Governance	48
3. Meghalaya Institute of Natural Resources	50
Chapter VIII Administrative Arrangements	52
Chapter IX Conclusion	53
List of Abbreviations used	56

Chapter I

Introduction

About half the people of Meghalaya live below the poverty line. If we were to achieve the Millennium Development Goal of halving the poverty level by 2015 and improving the basic services and welfare of the people residing in rural villages comprising 4 lakh households, it is imperative to adopt a forward looking approach for making optimum and productive utilization of the State's natural resources, viz., 'Water', 'Land' and 'Biotic Resources'. The State's rural population is heavily dependent upon the natural resources for livelihood support. However, pressure on natural resources due to increased needs, unsustainable resource utilization, etc. warrant putting in place a developmental framework that ensures sustainable livelihoods, gainful employment opportunities, and inclusive growth. Climate change coping strategies (mitigating and adaptive measures) further call for a fresh approach toward appropriate natural resources planning and management. Better convergence, better governance and higher participation of the Community in the Developmental efforts will have to be therefore, central to any new initiative for holistic development.

Government Departments, Organisations, Civil Society, Traditional Institutions, Grass root level Stakeholders must come together for improving the general well being and quality of life of the people. Effective planning, appropriate and timely interventions and adequate investment should happen through a better synergy of all the stakeholders.

Sustainable development of river basins for water, food and livelihood security is essential for triggering development of the people. River basins cut across political and administrative boundaries, and hence it is important that a basin approach for an efficient and more holistic management of natural resources is adopted, with due emphasis on new skill formation of the young people dependent upon the natural resources, so that they optimally and efficiently utilise the resources in a sustainable manner.

In line with the perspective of promoting inclusive growth with a focus on poverty alleviation, employment generation and livelihood promotion as highlighted by the Planning Commission in its Approach Paper to 12th Five-Year Plan, the Government of Meghalaya has decided to launch a programme titled **"Integrated Basin Development &**

Livelihood Promotion Programme (IBDLP)". Considering the fact that water as a resource has attained more significance and since the 12th Plan also gives more focus on water it has been felt that water is assigned the central focus in this Programme. To put it a little dramatically, water is at the heart of the IBDLP.

Water is increasingly becoming a scarce commodity. It is feared that India will face acute shortage of water in the near future. The state of Meghalaya is blessed with bountiful water resources that need to be harnessed. Hydrologically the State comprises of two basins, viz., the Left Bank of Brahmaputra Basin (11220.11km²) and the Brahmaputra Tributaries Basin (11208.89km²), three catchments viz., Kalang to Dhansiri Confluence (about 4499.61km²), Bangladesh Border to Kalang Confluence (About 6720.50km²) and South Flowing Drainage of Meghalaya (11208.89km²), eight sub catchments with a size range of 2.08 to 2.46 lakh hectare 35 watersheds with a size range of 0.05 to 2.67 lakh hectare and 179 watersheds with a size range of 0.03 to 0.22 lakh hectare. However, the hydrological units in the state are under stress as evident from the drying of springs and water sources, declining water storage capacities and reduced depth of flow of streams and rivers due to excessive human use, and sedimentation. This trend would call for urgent measures to arrest, failing which the social, economic and ecological development of the state itself could be adversely affected.

Therefore, the thrust areas of the IBDLP would include Integrated Water Resources Management, creation of **Small Multipurpose Reservoirs (SMRs)**, generating water centric livelihoods such as Fisheries, Aqua-tourism, etc. The objective is not only to capture surface run-off and water along the drainage lines, reduce erosion but also to formulate water policy and aim at better river governance. The SMRs will be used for various productive purposes like aquaculture, drinking water supply, mini-hydel (<100KW) irrigation, aesthetic value, tourism, eco-system promotion, etc.

Another thrust area under the Programme would be to address the issues and challenges arising out of Jhum and Bun cultivation with appropriate interventions under the aegis of Integrated Natural Resources Management and with active involvement of all the concerned stakeholders.

The success of effective basin management primarily rests on community mobilization, capacity building of the stakeholders, convergence, creation of flexible and modern institutions, better delivery of services, and overall improvement in Governance.

The programme will also seek to strengthen the traditional/local governance framework and creating a positive development orientation which includes all sections of the society. The focus will be on empowerment and transparency, development of open mindedness and inculcating the sense of ownership and responsibility from the conceptual stage till results are achieved. The IBDLP will provide leadership and strategic support to different Missions planned under it.

The Programme will result in local economic development and improving the quality of public services with focus on the poor and the marginalised. Improving local capacity in understanding the challenges relating to development and identifying strategies and programmes to meet those challenges will be addressed. Preparation of developmental activities that would leave significant impact on large populations and areas, would be accorded high priority so as to avoid wasteful projects and thin spread of resources. Achieving convergence across sectors and resources will be the key approach of the IBDLP, so that a shared vision of development will emerge and motivate all the stakeholders of the society.

Chapter II

Mission, Objectives and Key Interventions

Mission

“To promote optimal and effective development and utilization of basin resources for ensuring livelihood security and inclusive growth, within the framework of sustainable development”

Objectives

- i) To serve as a platform for different stakeholders to plan and implement convergent and integrated initiatives for a basin centred natural resource planning and management so as to promote water, food and livelihood security, and to bridge critical gaps for leveraging basin-centric investments.
- ii) To promote knowledge-centric development by building human capacity and capability in the domains of natural resources management, and entrepreneurship.
- iii) To evolve and promote climate change coping strategies and develop action plans.
- iv) To promote the creation of physical infrastructure critical to the programme in a convergent mode with complete community participation.
- v) To promote modern and flexible institutions capable of triggering positive changes in the current paradigm of governance.

Key interventions

1) Natural resources: An assessment of the natural resources available within the different basins/catchment areas will be undertaken for ensuring proper and sustainable utilisation of such resources. The key focus will be on water and all the good uses it can be put to, in a sustainable manner. Conservation, Restoration and Rehabilitation of the land and water resources, as also preservation of the Biotic Resources would be undertaken up for interventions under the IBDLP. An institute for Natural Resource Management would provide the requisite knowledge-base for such interventions.

2) Human Resources: The development of human resources within the different basins/catchment areas will be one of the major interventions under the Programme. Awareness generation, capacity building and training in different areas of the programme would be a

major area of focus. Meghalaya Institute of Entrepreneurship would be an initiative oriented towards this aspect.

(3) Infrastructure: The Programme seeks to facilitate the formation of critical infrastructure such as transport and road connectivity, rope-ways, water ways, rural energy, IT connectivity, post harvest technology and market infrastructures etc. so as to better leverage the natural and human resources for creating efficiencies and sustainable livelihoods. The touchstone for determining the type, location and the timing of the interventions in the infrastructure would be convergence with other agencies as also to ensure sustainability and non duplication of the on-going interventions. In a convergent mode, the gaps in support would be bridged to get the best value for investment in this sector.

(4) Institutions: Absence of a strong institutional framework is a major impediment to the sustainability of any initiative. The creation, operation, maintenance and management of the various institutions created under the Programme would require strong institutions that would take the agenda forward into the next plan. Establishing a well thought-out institutional edifice would be an essential element of the IBDLP.

(5) Governance: While the Programme seeks to put in place the necessary regulatory mechanisms for effective use and management of the existing natural resources, it would also create a social movement in favour of better governance, by triggering processes that are currently outside the realm of the governance. As an example, the civil societies and the Autonomous District Councils could be effective allies in the agenda for development, but are currently out of the framework of the governance due to a variety of historical and evolutionary reasons. Effective engagement of these agencies will ensure equitable distribution of the resources while at the same time having the impact of empowerment of the communities. So this aspect will be carefully integrated into the Programme.

Chapter III

Strategy

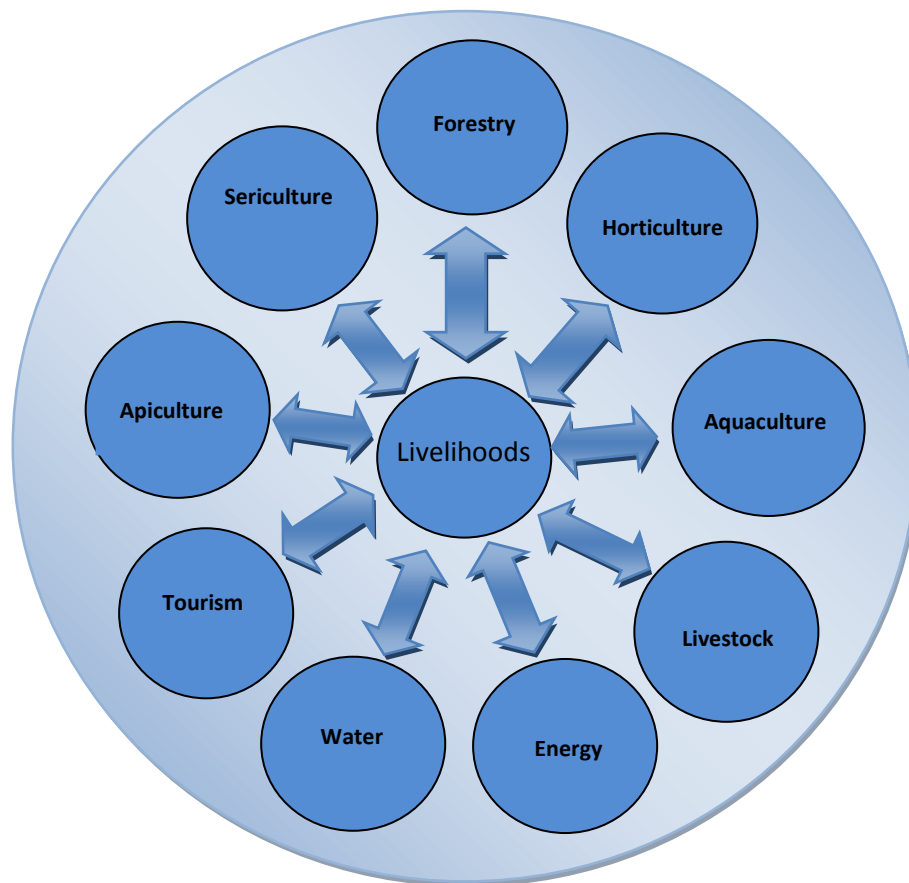
A two-pronged strategy will be adopted to implement the IBDLP as below:

(a) Mission Mode Approach.

(b) Integration Approach

(c) Accompanying Measures

Integrated Framework – Missions



(a) Mission Mode Approach

The core of this strategy would be to launch independent missions for the specific sectors and organically merging them with the IBDLP. This process will be highly participatory, involving all the stakeholders dependent on natural resources for their

livelihood as also the officials, professionals, experts and activists. The output will be implementable actions plans for enhancing production and productivity in various sectors. The expected outcomes are:

- 1) progressive restoration of water-land-biomass balance
- 2) improved livelihood opportunities based on sustainable natural resources management (NRM)
- 3) profitable and productive enterprises and
- 4) good governance.

As an example, the Aquaculture Mission has come up with a holistic plan for the area and productivity expansion by using the existing water resources of the state, while at the same time also creating space for conserving the natural water bodies, establishing the river sanctuaries which are safe havens for the native and indigenous fish species of the state. This will call for an understanding on the part of the communities about the need to preserve the native species of the fish which will call for a massive media strategy. Likewise, the whole of the Mission mode programmes will integrate the entire set of activities to make it a vibrant programme with multiple activities taking place under the umbrella of the IBDLP that will provide the requisite critical linkages and support for the Missions. A brief note on each of the Missions is provided below:

The following Missions will be put in place in the course of the 12th Plan period:

(1) Apiculture Mission.

Vision

Upscale and promote apiculture as an organized industrial enterprise so as to provide livelihood and gainful employment opportunities and to improve rural economy and the ecological system of the state.

Objectives

- (i) To enhance honey production in the state
- (ii) To respond to the increasing demand for honey.
- (iii) To generate self employment and sustainable economic development.



- (iv) To motivate beekeepers to adopt modern system of beekeeping as the traditional method is technically not feasible.
- (v) To upgrade the skills of the beekeepers, so as to enhance honey production through the use of technologies and minimizing wastage.
- (vi) To promote the availability of various support services for bee keepers.
- (vii) To establish enterprises creating market linkages for promotion of honey and value added products.

Interventions

- (i) Technology interventions: scientific bee keeping practices and structures, integrating technical and indigenous knowledge of bee keepers.
- (ii) Capacity building interventions- training, exposure visit, workshops, etc.
- (iii) Market interventions- creating market linkages for honey based products by developing value chain.

(2) Aquaculture Mission.

Vision

To achieve self-sufficiency in fish production within the state, tapping the potential of water resources in the State thereby generating employment for the people and sustaining their livelihood.

Objectives.

- (i) Development of existing water bodies and creation of additional water area for large scale fish production.
- (ii) Reclamation/rehabilitation of marshy and swampy lands and *bheels* and other water area and developing them into modern fish production system.
- (iii) Creation of mass awareness, capacity building, exposure training and skill development of all the stakeholders, for long term sustainability of fishery sector.
- (iv) Conservation of native, endangered and traditional species (Mahseer and Chocolate Mahseer) of Meghalaya and developing breeding farms of commercially potential species on a large scale.



- (v) Introduce and promote ornamental fisheries and also diversify the current range, so as to capture several emerging opportunities in the aquaculture sector viz., fresh water scampi culture, etc.
- (vi) Enhancement of water storage capacity through development of small water areas and micro-climate to sustain agricultural production.
- (vii) Extend all technical support at the door step of the stakeholders.

Interventions

- (i) **Area and Productivity Expansion** which will be achieved through four sub components, viz., individual pond construction, community pond construction, development of marshy and swampy areas and bheels and reservoir fishery development.
- (ii) **Critical Infrastructure Development**, which has five components, namely fish seed production, fish feed production, fish disease management, pre and post harvesting infrastructure and creation and strengthening of fishery and multi-purpose co-operatives.
- (iii) **Establishing sanctuaries** for conserving indigenous and epidemic species of fish.
- (iv) **Capacity Building** of farmers as well as officials, programme managers, multi-service providers, co-operators, etc. Mass mobilization campaigns and skill trainings for unemployed youth will also be organized.
- (v) **Mass media campaigns**, documentation and outreach, which will take care of two important activities, viz., awareness building about the Mission and publicity among the public and process documentation of the implementation and preparation of success stories.
- (vi) **Emerging opportunities** in the fisheries sector, which is an exclusive visionary component envisaged for tapping the emerging opportunities and addressing them with scientific backstopping. Ornamental fisheries, trout farming, introduction of freshwater prawn culture and new table species of fish and aqua tourism/ aqua parks/ sport fisheries will be the components.

(3) Forestry and Plantation Crops Mission.

Vision

“To conserve forests and wildlife of the State in a manner which includes preservation and maintenance of the dense forests and habitats, as also up-gradation and restoration of degraded forests, with a view to ensure, (on a sustainable basis), a healthy natural environment, environmental stability, a robust ecological balance, sustained legitimate tangible and intangible benefits of forests to the people of the State”



Objectives

- (i) Up-gradation and restoration of degraded forests in catchment areas in the State.
- (ii) Restoration of refractory sites, such as Pynursla, Amlarem, Mawsynram, Mawkyrwat, Rangira and Arbela.
- (iii) Reclamation and restoration of abandoned degraded mining areas, particularly in Jaintia Hills.
- (iv) Setting up permanent nurseries under all the social forestry divisions of the State.
- (v) Evolution of a mechanism of conservation/protection of forest with participation of local people, as also to provide them gainful employment opportunities.

Interventions

- (i) Integrated and multidisciplinary participatory planning and formulation of schemes involving activities such as agriculture, apiculture, horticulture etc; and implementation through Forest Development Agencies and JFMCs.
- (ii) Forest resources and livelihood promotion.
- (iii) Provide alternative sources of energy to reduce pressure on the existing forest for fuel wood collection.

- (iv) Catchment area treatment through preservation of very dense forests and increasing forest cover in moderately dense and open forest.
- (v) Contain jhum cultivation in the already affected areas by propagating improved jhum cultivation practices and rehabilitate such areas through social forestry, energy plantations and other plantations.
- (vi) Building Traditional and Professional Knowledge Base and Trade facilitation at the ground level to provide prior informed options to farmers enabling them to make rational choices.
- (vii) Development of Research Infrastructure for local species and creating gene bank.

(4) Horticulture Mission.

Vision

To help the farmers of the state to achieve increased production and productivity through technological interventions and support and service facilities to emerge as a “Horticulture Hub” of the North-East



Objectives

- (i) Identify and prioritize the pull factors for enhancing production and processing of horticultural commodities at specific locations.
- (ii) Established fully equipped nursery for production of quality planting materials of various horticultural crops.
- (iii) Organize capacity building training on modern production, post- harvest and value addition technologies among various stake holders.
- (iv) Establish convergence and synergy among various ongoing and planned government programmes in the field of horticulture development, and achieve horizontal and vertical integration of programmes by establishing forward and backward linkages.
- (v) Promote ecologically sustainable intensification, economically desirable diversification and skilled employment for rural youth, including farm women.

- (vi) Promoting high value fruits and vegetable crops, and commercial floriculture in newer and potential areas and improving the performance of existing production system.
- (vii) Establishing well organized and fully equipped markets with efficient market functionaries and processing units for horticulture commodities at appropriate places for value gains.
- (viii) Developing entrepreneurship among the growers towards value addition through markets interventions for better prices of the produces and products.

Interventions

Production enhancement–Resources and Production Management.

Diversify from traditional ways of cultivation/ plantation to orchards, vineyards, flowers and vegetable gardens, and disseminate appropriate technological information among the farmers for high-tech horticulture cultivation and precision farming.

Post harvest and value addition Management.

Promote improved harvesting process, storage of farm produce, value addition through processing, grading and packaging, etc by providing support for setting up post-harvest facilities such as pack house, ripening chamber, cold storages, Controlled Atmosphere (CA) storages, etc., processing units for value addition and marketing infrastructure.

Markets and marketing information Management.

Exploration of potential markets (domestic and external), simplified and collective marketing system, expanding marketing network, maintaining differential prices for organically produced products, improve easy accessibility to financial institution and provide cold chain transportation system for horticultural commodities.

Explore feasibility of promoting National Dairy Development Board (NDDB) model of cooperatives to ensure support and adequate returns to farmers.

Supply Chain Management.

Strengthening all the levels of infrastructure such as the inputs delivery, minimizing post-harvest losses, procurement of surplus production, cold storage chains, better and efficient processing and marketing techniques, efficient storage, warehouse and credit facilities and

competitive retailing would help in improving the supply chain, there by better prices to farm produce.

Capital Formation–Investment Management.

Exploit new opportunities to private participation in the production and marketing of high value farm products (vegetables, fruits, flowers and other similar products) through capacity building and entrepreneurship development.

Nature and Environment–Conservation Technologies.

Conserve and promote natural resources, eco-system and traditional native plantation crops.

(5) Livestock Mission.

Vision

To have an efficient and sustainable production and marketing of livestock and livestock products for domestic and export markets.



Objectives.

- (i) To develop infrastructure and create conditions to increase production of animal food origin like milk, meat and eggs as well as to generate self-employment and enhance livelihood options.
- (ii) To improve production and protection of livestock and poultry as well as to ensure better practices in management, breeding and feeding.
- (iii) To build up adequate technical expertise with broader training facilities to communities, extension workers, SHG/Societies/NGO.
- (iv) To create facilities for marketing of livestock and poultry and their products through SHG/Society near to the producer's place so as to provide flow of sale at better prices.
- (v) To strengthen the existing fodder production farm under State government and to encourage community fodder/forage farms.
- (vi) To provide full support for capacity building of officers, stakeholders and farmers on various aspects of management, healthcares, etc.

Interventions

- (i) **Production Enhancement**–Transfer of technologies: promote crossbred and improved genesis of animals and poultry birds along with better feeding and health care management.
- (ii) **Infrastructure Development**: Establish and develop cattle, pig and goat breeding farms and poultry hatcheries at different strategic locations in the State to cater the need of improved breed by the farmers. Development of clean and hygienic slaughter houses, chilling plants, etc.
- (iii) **Processing and value addition**–Transfer of technologies: promote collection, chilling, processing and packaging of milk for providing quality milk and milk products
- (iv) **Marketing Interventions**: Promoting simplified collective marketing and transportation system for milk and animal products, expanding marketing network and improve easy accessibility to financial institution.

(6) Rural Energy Mission

Vision

To, develop and use non-conventional energy to meet power deficit in the state as well as to reach out to the villages which are not yet covered under the electrical grid network and to initiate joint operations of the public and private sector in conceptualizing and facilitating clean energy.



Objectives

- (i) To impart knowledge and create awareness in the field of non conventional energy to the general public especially in the rural areas.
- (ii) To promote and implement non-conventional energy sources for bridging deficit power requirements–
- (iii) To initiate energy conservation programmes aimed at providing local energy requirements, of villages and towns through a proper blend of conventional and non-conventional energy sources.

Interventions

- (i) Awareness about non-conventional sources of energy.

- (ii) Sensitising the rural people about bio-energy and its utility.
- (iii) Capacity building interventions
- (iv) Developing solar and bio-energy.
- (v) Developing Bio-fuel plantations.

(7) Sericulture Mission.

Vision

To strengthen the handloom industry and make it globally competitive, by facilitating and enabling technological up-gradation including pre-loom and post-loom section in addition to the manufacturing section, and product diversification with special emphasis to blend products and innovative marketing strategies .



Objectives

- (i) To enhance silk production in the State,
- (ii) To create awareness among the rural populace particularly the women folk about silk activities and its potential to alleviate poverty,
- (iii) To develop Community Mobilization/Sensitization and Capacity Building of market production.
- (iv) To expand the economic plantation coverage, including replacement of old and uneconomic plantation by high yielding varieties in case of mulberry and by improved local variety in respect of Eri and Muga.

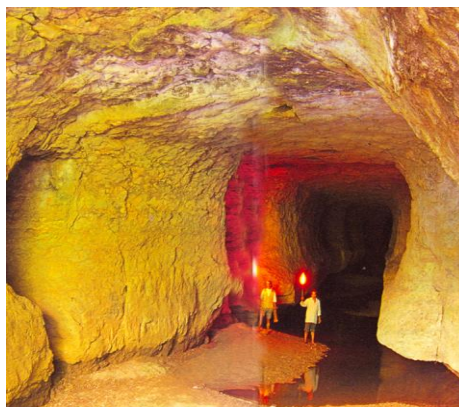
Interventions

- (i) Nursery creation for production of quality planting materials and seeds.
- (ii) Area expansion under mulberry
- (iii) Technology interventions to improve production and productivity of plantations.
- (iv) Up-gradation of existing production units.
- (v) Development of infrastructure for quality silk production.
- (vi) Capacity building including exposure visits.
- (vii) Entrepreneurship Development.
- (viii) Value Chain Development in the sericulture sector.

(8) Tourism Mission.

Vision

To harness the potential of tourism as an organized industry which will go a long way to promote livelihood and gainful employment opportunities and to improve rural economy.



Objectives

- (i) To organize tourism as an industry.
- (ii) To facilitate the promotion of ecological hotspots as tourism destinations.
- (iii) To promote traditional arts and culture of the state.
- (iv) To facilitate marketing of the indigenous produces and products of the state.
- (v) To provide opportunity for livelihood and employment through tourism.

Interventions

1. Augmentation of facilities for accommodation.

- (i) The Mission would facilitate development of infrastructure by harnessing funds from different sources available.
- (ii) Creation of theme village which will be a window to the indigenous culture of Meghalaya, which will be based on the three basic needs of food, clothes and shelter which will be traditional in nature.

2. Provision of Assistance.

- (i) Besides the package of incentives for the NE region already announced by the Department of Industrial Policy and Promotion in the Ministry of Commerce and Industry, Government of India, the following assistance will be provided
 - a) Assistance to entrepreneurs for creation of Home stays
 - b) Assistance to entrepreneurs for creation of Tourists Resorts, etc.

3. Training, capacity and skill building.

- (i) Training of tourist guides
- (ii) Strengthen of hospitality industries through training of staff
- (iii) Development of training infrastructure for tourism industry in the state.

4. Livelihood opportunities for the Community.

- (i) Ecologically sustainable tourism will be promoted with livelihood opportunities by tapping the local thrust areas such as Nature Tourism, Adventure/sports Tourism, Rural Tourism and Legend Tourism, Cultural Heritage, Music Tourism, Golf Tourism, Eco-Tourism, Cave Tourism, etc.

5. Brand building.

- (i) Creating a brand image of Meghalaya on the same line as 'Incredible India'.

(9) Water Mission.

Vision

To promote Integrated Water Resources Management in the State of Meghalaya and to conserve and use water judiciously.

Objectives

- (i) To promote judicious utilization of water resources in the state in all the three sectors surface water, ground water and rain water.
- (ii) To integrate water resource planning so as to pool the resources as well as to develop water grid.
- (iii) To promote water bodies for irrigation, drinking water, fisheries, etc.
- (iv) To promote water use efficiency in all water sectors.
- (v) To ensure adequate capacity building and training to all sections of stakeholders, technical officers and users.
- (vi) To develop and improve water bodies including rejuvenation of springs for enhancement of water storage so as to preserve water for adaptation and mitigation of climate change effect.
- (vii) To develop small multiple reservoirs and micro-hydels.
- (viii) To set up institutional structures for integrated water resource management.



Interventions

- (i) Awareness and Sensitisation Programme for efficient water use.

- (ii) Development of Small and Multipurpose Reservoirs.
- (iii) Value chain development linked to water resource.
- (iv) Legislation and policy farming.
- (v) Water quality control.

(b) Integrated Approach

As indicated above, the independent Missions of the different sectors will organically merge and integrate with the Programme. The following types of integration are envisaged:

(i) Inter-departmental Integration plan: An integration in this category would be to take up downstream activities after one department completes one activity. For instance, when the Soil & Water Conservation Department completes the construction of a Small Multipurpose Reservoir, the Fisheries Department will release the fingerlings in the Reservoir while at the same time training and activating the community towards fisheries sector. Likewise, the C&RD Department will look into the need for construction of a connecting road to the reservoir and the tourism department will develop the requisite tourism infrastructure.

In order to achieve maximum impact, it is possible to design projects, which have elements from several sectors. A typical watershed management programme would have components like Water and Soil conservation, water harvesting, mini irrigation, bio mass regeneration, fisheries, livestock, agro processing and micro enterprise components, but properly sequenced.

(ii) Convergence with Government of India's flagship programmes: For example, The State Rural Employment Agency is responsible for the implementation of the MGNREGS in the state of Meghalaya. Several earthworks are being done under the MGNREGS. Fish pond construction can be undertaken under the MGNREGS in close coordination with the Fisheries Department, so that the ponds are technically suitable for Fisheries development. The input costs will be borne by the individuals or the Fisheries department, as the case may be; so as to reduce the burden on the MGNREGS with respect to the material component so is the case with B.R.G.F. another Government of India's Programme

(c) Accompanying Measures

The above missions will have the support of the accompanying measures as below, which are separately elaborated:

- (1) Knowledge Management
- (2) Natural Resource Management and Climate Change Adaptation
- (3) Media and Outreach
- (4) Capacity Building
- (5) Infrastructure Development
- (6) Institutional Development
- (7) Financial Inclusion
- (8) Market Access
- (9) Policy support and Legislation
- (10) Convergence
- (11) Governance

Chapter IV

Framework of IBDLP

The framework under which the Programme is conceptualized and built upon to promote social, economic and ecological development and sustainability are Knowledge Management, Natural Resources Management, Entrepreneurship Development and Governance. Of the above four pillars, Knowledge Management is the cross-cutting function.

(1) Knowledge Management

The “National Knowledge Mission”, Government of India in its “Report to the Nation, 2006–09,” stated that knowledge has been recognised as the key force in the 21st century and India’s ability to emerge as a globally competitive player will substantially depend on its knowledge resources. Knowledge management is considered critical in relation to different missions, as below:

- (i) Productivity/yield gap – to utilize knowledge on new generation technologies
- (ii) Sustainable resource use- knowledge on how to bring about collective decisions on resource use
- (iii) Marketing and quality management- knowledge on organized and efficient marketing, value chain, etc
- (iv) Climate change- knowledge for anticipation and adaptation
- (v) Reform – knowledge on how to promote institutional learning and creation of institutions that are current and futuristic.

The important challenges related to knowledge management are:

- (i) Grounding the processes needed to convert data into information that can be utilized with meaningful insights.
- (ii) Translating and communicating information into knowledge that is of interest and can be used.

- (iii) Generating knowledge that can help in informed planning, decision making, monitoring and evaluation of impact.
- (iv) Development of tools and models for data and generation of information that can be disseminated.
- (v) Providing a strong foundation and infrastructure to build tomorrow's knowledge-based society, particularly in rural areas of the State.

Comprehensive need assessment of knowledge inputs required for the Programme and effective integration of the existing knowledge inputs available with stakeholders with a robust and vibrant system for exchange of information for a vital part of the knowledge management planning process. Leveraging ICT and Mass Communication Technology will facilitate knowledge development and management. A state knowledge centre would be a necessity for this intervention.

(2) Natural Resources Management (NRM)

We can meet the challenges only by redirecting the thrust of our development process that the basic needs of the people are met by judicious and sustainable use of natural resources. Conservation that covers a wide range of concerns and activities is the key element for sustainable development. Natural resources management encompasses development imperatives as also draws up plans and measures related to climate change coping mechanism.



The primary concern for natural resources management is to ensure community initiatives to re-enforce traditional ethos and build a society conscious of conservation while making optimal and efficient use of natural resources guided by modern technology as also integrating traditional knowledge.

Natural resource management solicits comprehensive approach for improving livelihood needs. This calls for **Participation in Practice** of all concerned stakeholders in natural resources planning and management. An effective Natural resources management plan

should envisage providing at least a minimum of three livelihoods, generally from amongst agriculture, horticulture, plantation crops, livestock, fishery, apiculture, sericulture and forestry activities.

(i) Natural Resources Management (NRM) Plan would be based on the following principles;

(a) Equity and Inclusiveness. NRM Plan (comprising the 10 Missions) would be considered as a lever of inclusiveness which would facilitate equity processes such as (a) enhanced livelihood and gainful employment opportunities particularly, for the poor through inclusive investment in their assets and improvement in productivity and income, (b) improving access of the poor to the benefits, (c) enhanced role of women in decision making process and their representation in the institutional arrangements and (d) ensuring access to usufruct rights from common property resources for the resource poor wherever possible/practicable.

(b) Decentralization. With decentralization, delegation and professionalism can be improved. Establishing suitable institutional arrangements at the village/cluster, with prior informed consent of the village durbar/council and the operational flexibility in norms to suit varying local conditions will enhance decentralization. Empowered committees with delegation to rationalize policies locally, continuity in administrative and governance support and timely release of funds are the other instruments to be put in place for effective decentralization.

(c) Facilitating Agencies. Professionals with competence having necessary skills and expertise would be required to undertake social mobilization, community organization, building capacities of communities in participatory planning, implementation, management, operation and maintenance of assets created, monitoring and evaluation, which also need intensive facilitation.

(d) Capacity Building and Technology. Capacity Building is a crucial component for achieving the desired results. **This would be a continuous process enabling functionaries/stakeholders at different levels to enhance their Knowledge and Skills and develop correct orientation and perspectives, thereby becoming more effective in performing the designed jobs and undertaking roles and responsibilities.** With current trends and advances in information technology and remote sensing, it is possible to acquire

detailed information about the various field level characteristics of any area/region. **Thus, the endeavour would be to build in strong technology inputs into the vision of NRM Plan.**

(e) Monitoring, Evaluation and Learning: A participatory, outcome and impact- oriented and user – focussed monitoring, evaluation and learning system is another area emphasised in NRM plan to obtain feedback and undertake improvements in planning, designing, implementation etc.

(f) Organizational Restructuring: NRM Plan envisages establishing appropriate technical and professional support system at different levels. Thus, developing effective functional partnership with concerned line departments and support organizations would play a vital role.

Natural Resources Management solicits comprehensive approach to improve livelihoods apart from promoting water security and food security and nutritional security. **Hence, this calls for participation in practice of the concerned stakeholders, namely, synergised efforts for convergence of all line departments and active and voluntary participation of the ground level stakeholders. The NRM Plan envisages to promote a minimum of three livelihoods, as also a paradigm shift from beneficiary oriented approach to entrepreneurship promotion.**

(ii) Priorities & Strategies for Action

(a) Land and Water

The importance of water as a finite, though renewable resource has to be clearly recognized. Water and land are to be considered together and holistically, particularly in the context of utilization for sustainable development. Water conservation measures, discipline on use of water, economising the consumption of water in households, agriculture, etc. and appropriate recycling would be essential.



The steps taken for sustainable use of water and land resources would include the following:

- (i) Classification, zoning and apportioning of land for designated uses such as agriculture, forestry and cash/plantation crops (not on mono-culture mode), green areas, industrial activities, etc., based on assessment of their capabilities and environmental considerations.
- (ii) Societal regulations for appropriate water and land uses to protect soil from erosion, pollution, degradation, etc.
- (iii) Protection of land near water sources/bodies and prevention of construction there-upon and other activities which may otherwise lead to pollution and depletion of water sources/bodies.
- (iv) Measures to ensure equitable access to and responsibility for sustainable use of land and water resources.
- (v) Micro/Grass-root level planning to develop appropriate methodology and implementation of action plan at the village level in land use planning and management
- (vi) State wide campaigns and activities to minimise soil and run – off losses by carrying out extensive works like construction of multipurpose small reservoirs/ storages, terracing, graded bunding, catchment treatment and protection of vegetative cover in the catchments.
- (vii) Restoration and reclamation of degraded areas, mined areas, quarried areas, etc.
- (viii) Development of appropriate integrated farming system and adoption of sloping agricultural land technology model.
- (ix) Building up a network for scientific assessment and monitoring water (surface & ground water) and soil quality, on a permanent basis as in the case of meteorological stations.
- (x) Measures for water conservation, recycling and optimal conjunctive use of surface and ground water for various purposes.
- (xi) Conservation of wet-lands/rivers/lakes for ensuring sustainable ecological and economic benefits.
- (xii) Repair, Rejuvenation and Restoration of water bodies to promote need-base, ecological and economic development.
- (xiii) Encouragement to and improvement in traditional methods of rain water harvesting and storage.

- (xiv) Control and abatement of pollution of water bodies from municipal and industrial wastes generated from habitats by intercepting and diverting such wastes away from water bodies.
- (xv) Classification, zoning and regulations for maintaining the quality of water bodies to protect and enhance their capabilities to support the various designated uses.

(b) Biodiversity

Action for conservation will be directed to:

- (i) Intensification of surveys and inventory of biological resources including mapping the different ecological systems. The survey should include information on distribution pattern of particular species/ population/communities and the status of ethno-biological important groups.
- (ii) Conservation of biodiversity through a net-work of protected areas including biosphere reserves, parks, sanctuaries, gene conservation centre, wetlands and such other natural habitats of biodiversity. This should include taxonomic and ecological system studies on the flora and fauna.
- (iii) Conservation of flora and fauna which helps in the reclamation of wastelands and revival of biological potential of the land.
- (iv) Protection and sustainable use of plant and animal genetic resources through appropriate practices.
- (v) Protection of domesticated species/ varieties of plants and animals to conserve indigenous genetic diversity.
- (vi) Maintenance of biological corridors between national parks, sanctuaries, forests, and other protected areas.
- (vii) Support programmes for protecting traditional skills and knowledge for conservation.
- (viii) Development of technology to multiply, breed and conserve the threatened and endangered species through new generation technologies



- (ix) Discouragement of monoculture and plantation of dominating and exotic species, in areas unsuited for them and without sufficient experimentation.

(c) Biomass

For the vast majority of the rural people, the foremost needs are fuel-wood, timber, fodder, fibre, etc. The issue of sustainable resource utilization, therefore, has to be specially addressed, mostly from the point of view of biomass requirements of the rural poor.



Action will be directed to:

- (i) Devising ways and means by which local people can conserve and thereafter utilize the resources of the common lands and degraded forest land, so that they have a stake in the continuing productivity of the resources.
- (ii) Encouraging private individuals and institutions to regenerate and develop their wastelands.
- (iii) Raising fuel wood species and provision of alternatives to reduce the dependence on fuel wood.
- (iv) Taking measures to increase the production of fodder and forage crops to bridge the wide gap between supply and demand.
- (v) Raising bamboo and species providing small timber for construction of house, farm implements and other economic activities.
- (vi) Enhancing availability of biomass to meet essential requirement of biomass – based industry.
- (vii) Promoting synergy between forest-based industries and farming to raise needed raw materials without diversion of prime agricultural lands and displacement of small and marginal farmers.
- (viii) Focussed research and development in forestry for better regeneration and improved productivity.
- (ix) Development of appropriate technologies for enhancing the productivity and efficient use of all biomass resources
- (x) Institutional and technological support systems to enable rural artisans to sustain biomass based crafts.

- (xi) Curtailment of the supply of subsidised biomass based resources for industrial purposes.

(iii) NRM Perspectives in Certain Key Sectors

(a) Agriculture:

For sustainable management of agriculture, the action points would include the following:

- (i) Development of integrated pest management.
- (ii) Development of integrated nutrient management.
- (iii) Development and promotion of methods of sustainable farming, especially organic and natural farming.
- (iv) Efficient and judicious use of inputs including agro-chemicals with minimal degradation on soil health.
- (v) Promotion of integrated farming system/sloping agricultural land technology model.
- (vi) Ensuring land for different uses depending on land capability and land productivity.
- (vii) Evolving cost effective and efficient methods of water conservation and use.
- (viii) Incentives for cultivation of crops with high nutrients value and those with lesser demands on water and energy inputs.
- (ix) Encouraging crop rotation patterns.
- (x) Strengthening local institutions to ensure effective decentralization and optimal resource management.
- (xi) Anticipatory programmes and contingency plans for disasters such as flood and drought and climate change.



(b) Water

- (i) Priority to multipurpose small reservoir/storage to harvest and conserve runoff rainwater
- (ii) Revival of traditional water management system including improvement / modification of the existing ones
- (iii) Measures for increasing the efficiency of water use, water conservation and recycling



- (iv) Catchment area treatment and management of drainage areas, protection of vegetal cover and measures to prevent siltation in an integrated manner.
- (v) Focus on network of small micro- irrigation and water projects with minimum environmental disruption which will be of great value to local communities and also capable for multipurpose uses.
- (vi) Promotion of institutions for scientific management of the assets (water, reservoir and distribution system, etc)

(c) Livestock

The activities relating to animal husbandry will concentrate on the following:

- (i) Improvement in genetic variability of indigenous population.
- (ii) Selective breeding of animals for draught power to conserve fuel.
- (iii) Promotion of stall feeding and rotational grazing.
- (iv) Involvement of village community in the policy planning for development of community pasture lands and stall feeding.
- (v) Incentive for growing fodder/ forage crops and establishment of community – based fodder banks.



(d) Forestry

Concerted efforts will be made for raising forest cover and for conservation of existing forests which constitute an essential life support system and as a source for food, fuel, fibre, medicines, etc. For attaining the goal of having at least one-third of our land under very dense/dense forest cover, intensified measures on a mission mode are to be taken along with intensive mobilization of resources for this purpose. In this regard, the actionable points would include the following:



- (i) Maintenance of environmental stability through preservation and, where necessary restoration of the ecological balance adversely disturbed by serious depletion of forests
- (ii) Conserving the natural heritage by preserving the existing natural forests with diverse flora and fauna, which represent the biological diversity and genetic resources of the state and the country on the whole.
- (iii) Increasing substantially the forest/tree cover involving local people by providing tangible economic benefits and gainful employment opportunities meeting the rights and concessions for requirements of fuel, wood, fodder, minor forest produce, small timber of the rural population with due cognizance of the carrying capacity of the forest.
- (iv) Increasing the productivity of forests to meet essential and livelihood needs.
- (v) Afforestation on common lands by the local communities through usufruct sharing. Promotion of village forests for protection of water sources/bodies apart from ecological and economic benefits will be encouraged.
- (vi) Motivation of farmers/land owners to resort to tree farming in similar manner with crop-based farming will be encouraged.
- (vii) Substitution of wood by other materials for alternative sources of energy and fuel efficiency will be done.
- (viii) Forest-based industrial units promoting unsustainable utilization of forest based raw-materials will be discouraged.
- (ix) Creation of land banks for compensating afforestation will be attempted.
- (x) Permission to forest-based enterprises after thorough scrutiny regarding availability of materials will be granted

(e) Rural Energy

- (i) Decentralized small projects for meeting rural energy needs like the solar, wind and micro-hydel project will be encouraged.
- (ii) Concerted efforts for development and propagation of non-conventional and renewable energy system will be undertaken
- (iii) Incentives for use of non-conventional energy sources like solar, wind, etc will be put in place

- (iv) Setting up biogas plants based on cow dung, pig dung, vegetable wastes, etc. will be promoted.
- (v) Bio- fuel plantations will be taken up over the wastelands of the state.

3 Entrepreneurship Development

Entrepreneurship development and promotion is interlinked with knowledge, skill, attitude, risk taking and other traits necessary to function as a successful entrepreneur. Entrepreneurship development is related to creativity and innovation and enterprise could be in any field connected to management, and not necessarily business and marketing alone.



Under the Programme, promoting entrepreneurship development aims at developing behavioural and managerial qualities with necessary support for engaging in natural resources management, knowledge management, governance, business and enterprise. The entire spectrum of activities such as knowledge development, incubation, handholding, financial inclusion, market access, infrastructure services, namely, storage facilities, transport services, connectivity, water and energy security, cold chain and organised market services will be facilitated along the identified **Value-chains** covered under the Programme.

The focus on complete value chain management of the different production sectors coupled thrust on thematic and institutional convergence of developmental initiatives will reduce the business risk and will also enhance comparative advantage of the State in gaining greater market access.

4 Governance

Under the Programme, the importance of good Governance from the perspective of ensuring effective service delivery is a major area of concern. Awareness campaigns, sensitization and mobilization, knowledge management and information sharing would facilitate education and empowerment, which in turn would enable the people to have access to rights and exercise them in the best interest of the community. Having access to knowledge, particularly those which concern livelihoods and gainful employment opportunities strongly facilitate paving the way to **participation in practice and good governance** while at the same time addressing sustainability and sustainable development.



While the Programme will also seek to put in place the necessary regulatory mechanism for effective use and management of natural resources, it is also possible to regulate local self governance through social movements, Local self-regulations by the people as users which should emerge through social movement and social agreement.

Chapter V

Convergence under the Programme

Convergence refers to the successful delivery of integrated services that previously did not exist, or were provided separately by different institutions. One of the main objectives of the IBDLP is to provide integrated services in convergence mode. Some of the benefits of seeking convergence are:

- (i) Avoids duplication of efforts and redundant actions.
- (ii) Enables sharing of resources for common objectives.
- (iii) Enhances effectiveness of programme delivery.
- (iv) Improves quality of service provided.
- (v) Develops effective linkage with various development initiatives.
- (vi) Helps to identify new opportunities and options.
- (vii) Ensures transparency and accountability in governance.
- (viii) Effective monitoring of outcomes.

It is expected that convergence of other inter-sectoral schemes with the Programme will enable better planning and effective investment in the state. Synergy and Convergence bring together different Government programmes and/or schemes in terms of planning and related actions. It also helps in avoiding duplication of efforts by different agencies and thus save resources in terms of time, space and money. A holistic approach for the development of the river basins in Meghalaya will call for complete convergence with other departments and agencies.

Convergence can be under different forms and types. A brief outline on the forms and types of convergence is given

(a) Forms of convergence

- (i) Gap filling (Co-convergence) e.g.: RKVY, ATMA, viability gap funding
- (ii) Dovetailing (additive convergence) e.g.: MGNREGS with NWDPR, IWDP, IWMP, WDOSCA, etc.

- (iii) Value addition (Convergence plus) e.g.: MGNREGS works followed under PMGSY
- (iv) Scaling up (multiple convergence) e.g. : funding under RSVY,BRGF, etc

(b) Types of convergence

- (i) Inter- departmental convergence- convergence of different programmes of various ministries e.g.: MGNREGS of MORD and programmes of Ministry of Water Resources like AIBP, RRR etc.
- (ii) Intra-departmental convergence- convergence of one scheme with other schemes of the same ministry e.g. MGNREGS and SGSY,MGNREGS, IAY, IWDP, IWMP, TSC, etc
- (iii) Functional/thematic convergence- convergence of similar works under different scheme e.g.: watershed/wasteland and development, etc under different schemes like NWDPRA,MGNREGS, IWDP, IWMP, JFM, WDPSCA, etc
- (iv) Institutional/ schematic convergence- Project specific convergence of different departments working toward achieving the same objective e.g.: department of fisheries and department of Tourism working together for establishing fish sanctuaries, Eco-tourism with Forests and Environment, Soil and Water Conservation, etc.
- (v) Financial convergence – convergence of different financial institutions and schemes joining hands together for financing a sector or mission. E.g.: financial assistance under various schemes like RIDF of NABARD, schemes of DONER ministry, BRGF, NEC, IWDP, IWMP, WDPSCA, NWDPRA, AIBP, RRR, etc.
- (vi) Technology convergence-bringing together available technologies related to a sector from the different technological institutions for adoption by the farmers e.g.: Sourcing and inducting technologies related to water treatment from various technological institutions.

Some of the important programmes of the Government of India with substantial scope for convergence are- MGNREGS, WDPSCA, NWDPRA, IWMP, IWDP, RRR, AIBP, etc. However, there are other schemes under different Ministries, which also provide scope for convergence, provided proper planning is done for convergence.

National Rural Livelihood programme (NRLM) works on three pillars- a) enhancing and expanding existing livelihoods options of the poor, b) Building skills for the job market outside, and c) Nurturing self employed and entrepreneurs. Livelihood services include

financial and capital services, production and productivity enhancement services that include technology, knowledge, skills and inputs, market linkages, etc. NRLM would seek to ensure that the infrastructure needs for key livelihood activities of the poor are fully met. NRLM would place a very high emphasis on convergence with other programmes of the MoRD and other central ministries and programmes of State Governments for developing synergies directly and through the institutions of the poor.

Water has been at the core of various developmental schemes initiated by the different ministries of Government of India. Consequently, there have been a number of schemes initiated by different departments, which have as their critical component, water conservation and management issues. Watershed development projects are being implemented in Meghalaya under four programmes of Government of India viz., Integrated Watershed Management Programme (IWMP), Integrated Wastelands Development Programme (IWDP), Watershed Development Project in Shifting Cultivation Areas (WDPSCA), National Watershed Development Project in Rain fed Areas (NWDPR). A watershed project in a village is considered as an immensely suitable focal point for the various developmental activities for synergy and convergence.

(c) Thematic Convergence

Since sustainable production under any sector revolves around water resources, water should be at the centre of the whole Mission Programme which has to be taken advantage under the Programme. The Mission should strive for sustainable water based livelihoods and ensuring nutritional security for the people. The following departments may work together for synergistic and sustainable use of water resource in the State of Meghalaya.

- (i) Department of Water Resources– conservation and expansion of water bodies in the state, water harvesting structures.
- (ii) Department of Agriculture– Scope for expansion of irrigated agriculture, efficient use of irrigation water for integrated farming.
- (iii) Department of Horticulture– Protected cultivation, poly houses and water saving irrigation devices.
- (iv) Department of Fisheries– Expansion of area under pisciculture at individual and community level, conservation of indigenous fish species.

- (v) Department of Animal husbandry- Scope of safe duck rearing, integrated farming with piggery and pisciculture.
- (vi) Department of Public Health Engineering – Supply of safe drinking water, storage tanks for water, rain water harvesting structures.
- (vii) Health and sanitation- Control of water borne diseases, waste management and disposal, plastic free zones, testing quality of water.
- (viii) Department of Tourism- Promotion aqua-tourism, water sports, fish sanctuaries.
- (ix) Department of Soil and Water Conservation- Construction of water bodies for multipurpose uses, watershed development.
- (x) Department of Forestry- Afforestation for ensuring better catchment areas for rainwater conservation.
- (xi) Directorate of Non-conventional Energy- Mini- hydel projects, renewable energy.
- (xii) Non Conventional Energy- Renewable Energy (rural emphasis) like Bio-Energy, Solar, Wind Energy.

(d) Convergence of funds

For funding of activities under the Programme, the following measures are suggested.

- (i) Funds for similar works under different schemes may be converged. For instance, construction of water bodies under IWDP/ IWMP/ WDPSCA/ NWDPR of Soil and Water Conservation and Agriculture Departments respectively and construction of water bodies by the Department of Water Resources and also under MGNREGA, etc.
- (ii) Programmes that allocate funds under the same head may be identified and such programmes can be converged. For instance, six programmes of the Government of India's Programme has a budget for "Capacity development" under MGNREGS, BRGF, NFSM, RKVY, NWDPR, IWDP, IWMP, RIDF, NHM etc. A common training programme can be designed for these schemes and thus the funds could be converged.

- (iii) Provisions under certain schemes for gap filling can be utilised. For instance, BRGF can be used to bridge vital gaps in local infrastructure and other development requirements that are not being adequately met through existing funds. Similarly, VGF (Viability Gap Funding) can be used for filling the gaps in funding. Infrastructure Gap Filling Fund could be created for local infrastructure development in similar lines as done by the Government of Tamil Nadu under RD and PR Department.
- (iv) Convergence of funds for facilitation of ecological synergies under various schemes under NRM, NICRA (National Initiative on Climate Resilient Agriculture), Water Mission, etc may be planned.
- (v) Convergence of funds from public sources and private agencies may be tapped (for projects under PPP mode).

It is suggested that the various line departments and other stakeholders under the Programme may be deliberated on the scope, possibilities and opportunities of converging with the various Missions and activities under the Integrated Basin Development and Livelihood Programme and draw up a map and convergent action plan for implementation.

Chapter VI

Accompanying Measures

The Programme visualizes synchronized efforts for comprehensive facilitation of enterprises with the help of necessary accompanying measures such as:- Knowledge Management, Natural Resource Management, Climate Change Adaptation, Media and Outreach, Capacity Building, Infrastructure Development, Institutional Development, Financial Inclusion, Market Access, Policy Support and Legislation, Convergence and Governance with particular thrust on the following:

✓ **Micro Enterprise Promotion**

Micro-enterprise is the key to generate employment opportunities as well as income earning avenues to both landless and women as also landholders. Therefore, the poverty alleviation approach under the different agro-climatic sub-zone regions in the state requires a better understanding of the interaction of agriculture and allied enterprise and their implications on the household economy.



Agriculture and allied activities support livelihoods to majority of the rural population in Meghalaya. In recent years, land-based livelihoods of small and marginal farmers are increasingly becoming unsustainable, since their land has not been able to support the family food requirement and food for their livestock. As a result, rural households are forced to look at alternative means for supplementing their livelihoods. In this context, natural resources- based micro-enterprises should emerge as alternative livelihood opportunity in rural areas. For want of skills, it becomes difficult for the farmers to venture into such microenterprises. A development strategy is, therefore, required to facilitate small landholders, landless, women group to benefit from agriculture and allied activities. Such development strategy would address successful growth in the vast rain fed region of the

state to enhance agricultural and allied production and conservation of natural resources and raising rural livelihood system.

Development of appropriate knowledge for effective conservation and prudent utilization of natural resources is an essential prerequisite for food/water/livelihood-security, climate change management and sustainable development. Since a sizeable portion of the population of Meghalaya is dependent on the natural resources and ecosystem for livelihood and overall well-being, it becomes essential that adequate resources are produced for ensuring effective and **participation in practice** of the stake holders in the process of managing the framework of micro-enterprise in line with sustainable development. The poor can effectively participate in the process only if the agenda of such development is squarely inclusive of their interests in livelihood security, long term prosperity and general well-being.

There is a need for a paradigm shift which would take more seriously to a more open management system approach, in a balanced manner, where all levels have a say in the allocation and use of the resources. If properly done, this people-centric approach could energize a vast reservoir of under-utilized human and financial resources and provide them with a key to generating gainful employment opportunity and livelihoods through enterprises.

Although micro-enterprises are operating locally and have low entry and exit barriers, they suffer from major constraints, such as:

- (i) Flow of funds (credit availability) for their effective operation.
- (ii) Shortage of capital.
- (iii) Lack of organised structure and necessary skills in the chosen activity / entrepreneurship.
- (iv) Competition from larger units.
- (v) Inadequate marketing facilities and ineffective pricing for goods/products.

Along with credit, poor people need various other support services, namely training for skill development, information, insurance and market linkages which would minimize risk and enable them to generate income for their sustainable livelihoods.

There is an urgent need to make the farmers understand how natural resources management can become a part of effort to support diverse livelihood portfolios where a win-win situation can be created through improving the resources-base and creating more conducive environment for undertaking micro-enterprises activities, leading to an overall increase in standard of living, employment, poverty reduction and building resistance of the community to cope with any kind of situation or otherwise.

✓ **Financial inclusion**

Credit is one of the critical inputs for economic development. Its timely availability in the right quantity and at an affordable cost goes a long way in contributing to the wellbeing of the people especially in the lower rungs of society. Access to finance, especially for the poor and vulnerable groups is a prerequisite for employment, economic growth, poverty reduction and social cohesion. It will also empower the vulnerable groups by giving them an opportunity to have a bank account, to save and invest, to insure their homes or to partake of credit, thereby enabling them to break the chain of poverty.



The Committee for framing the Strategy for improving Financial Inclusion Plan, Government of India is of the view that the overall strategy for financial inclusion, especially amongst the poor and disadvantaged segments of agriculture population should comprise–

- (i) Ways and means to effect improvements within the formal credit delivery mechanism
- (ii) Suggest measures for improving the credit absorption capacity especially amongst the marginal and sub- marginal farmers and poor non-cultivator households.
- (iii) Evolve new models for existing outreach
- (iv) Leverage on technology solutions to facilitate large scale inclusion.

Benefits of Financial Inclusion

Access to safe, easy and affordable credit and other financial services by the poor and vulnerable groups, disadvantaged areas and lagging sectors is recognised as a precondition for accelerating growth. Financial Inclusion leads to:

- (i) Financial literacy
- (ii) Non-discrimination and equal opportunity
- (iii) Financial independence, and
- (iv) Reduced income disparity and poverty

The people who come under this bracket of financial inclusion are poor, socially under privileged, disabled, old as well as children, women and uneducated ethnic minorities and unemployed. Special emphasis will be given to women since it is well established that direct financial transfers including wages if made to women relative to men lead to the creation of productive assets.

The programme will, therefore, aim at

- (i) Facilitating the benefits from the various programmes under financial inclusion initiatives for the small and marginal farmers and other economically weaker sections of the society.
- (ii) Providing seed money by facilitating opening of bank accounts for the targeted category, which in turn can facilitate payments of (a) Wages of MGNREGS (b) Old Age pensions (c) Family benefits schemes etc through bank accounts thereby ensuring transparency and avoidance of manipulation at the programme implementation level;
- (iii) Operating bank accounts of the respective families in the name of the women Head of the Family befitting the spirit of the “ Empowerment of Women” and
- (iv) Facilitating upsurge of various economic activities using banking networks through convergence approach, and integrating existing programmes available for poverty alleviation.

The seed money so deposited in respective accounts shall not be eligible for withdrawal from the Accounts by the individual so as to avoid dislocation of the banking practices. The seed money could be used only to raise additional loans to take up income generating

activities, for which backward linkages are to be established through convergence of other schemes being implemented by the line Departments.

✓ **Markets**

(a) Market Access

Markets are important for agricultural growth and sustainable development. The lack of markets, or poor access to existing markets not only affect farmers and livestock herders locally in rural areas, but are a drain on the potential of the entire state. Creating local and national markets and improved access to them, allows specialization and diversification into new agricultural



products, enabling to make profits for rural households and improving the lifestyle of the rural poor. This also helps in generating employment through the requirements that arise out of the trading process with regard to production, processing, marketing, etc.

Recent years have witnessed a shift towards differentiated products (mostly high value agricultural products) and services, which has also affected the local markets in terms of small-scale and large-scale demands, which the local producers are unable to meet. The farm sector is mostly dominated by small holders and their ability to perform in this emerging market had always been questioned. Traditionally, farmers were mostly growing field crops and they lack necessary information and skill regarding production methods, marketing opportunities and meeting the consumer demands. The situation becomes critical when the target consumers have very precise quality requirements and/or strict food safety requirements.

Though Meghalaya is predominantly an agrarian economy, and agriculture and allied activities engage nearly two-thirds of the total work force, the contribution of this sector to the State's NSDP (Net State Domestic Product) is only about one-third. Agriculture in the state is characterized by **low productivity and unsustainable farm practices**, giving rise to a high incidence of rural poverty. As a result, despite the large percentage of population engaged in agriculture, the state is still dependent upon imports from other states for most food items such as meat, eggs, food grains etc. Infrastructural constraints have also

prevented the economy of the state from growing at a pace commensurate with that of the rest of the country.

Trade in Meghalaya is at the mercy of the market. Such market characteristics do not ensure equal benefits to the players in the sector with the rural farmers bearing the brunt of it all. Arbitrage is one of the serious outcomes of an unorganized market whereby the final outcome is the scenario where the entire market is controlled by a handful of influential individuals and groups. Additionally the market is not defined where the processes of production and supply of products is not collective but fragmented and crowded with multiple players, service providers, stakeholders, etc which furthermore reduce the probability of success of any type of interventions.

Also, infrastructural constraints in the rural areas still remain the biggest stumbling blocks for market development. Infrastructure directly related to markets such as proper road connectivity, proper market areas with associated facilities is still not adequate in the state. Other associated infrastructure like processing units and other agri based facilities are still not realised and related opportunities are not tapped to the fullest extent as compared to the feasibility in the state. The absence of direct flow of information between the farmers and the market is also a factor that is to be taken seriously.

Being a state extensively involved with agricultural related economic activities, the development of rural markets will open up employment opportunities for the producers, semi-qualified and professionals in the state. The need to develop the market also opens up the chance for a holistic convergence of all line departments, private players in the different sectors as well as the local producers. The existence of “Niche Products” like honey, turmeric, etc which is already connected to the state as a source of production also opens up for the local market linking up with other markets at the national and international market.

Keeping in mind the mission of the programme, there is a need to link an operative system of Market Access/Linkage with the economic activities that are associated with the 10 missions. The output from each of these missions requires a market that would result to transactional activities with buyers and sellers at the local, national and international level. Also keeping in mind the current scenario, there is an equally important requirement to link the sources of production at the village levels right to the markets. Thus, to ensure the success of the programme, Market Access/Linkage plays the crucial role of linking all the 10

missions to the market and henceforth achieves the goal of the programme that is to ensure livelihood security of the rural poor.

Based on the current scenario in the state with respect to market access and linkages, there is a need for an exclusive organization that would intervene through the IBDLP. It is necessary to re-facilitate and improve the existing market access systems and infrastructure for the purpose of creating a single Unit for providing the local producers with easy market access for their commodities. The Meghalaya Trade Promotion Organization (MTPO) is an initiative of the programme to work in this direction.

(b) The Meghalaya Trade Promotion Organization (MTPO)

The Meghalaya Trade Promotion Organization (MTPO) will be a firm based at Shillong that will respond to the needs of producers/suppliers across the state for assistance in their business activities. Through interaction with a number of local producers, Government officials and consultants, the MTPO will identify clients who require assistance



and who are eager to take advantage of the organization's skill competency, networks, understanding and insight into their businesses. The MTPO is exclusively focused on local producers and suppliers pertaining to their trading activities i.e. market access/linkages, etc.

Objectives

The MTPO realises the current state of affairs of the local producers in the state and the herculean task of changing the current scenario for the better. Hence the main objective of the organization is to build strong pillars of foundation inclusive of knowledge, technology, transparency and cooperation

The main objectives are:

- (i) To ensure good returns to the company's stakeholders
- (ii) To set up infrastructure/ facilities which would help facilitate rural, urban, national, international market access for the local producers.

- (iii) To help create and strengthen market linkage cum value addition units at strategically identified key locations in the state.
- (iv) To initiate online information centres which would provide “local market information” to the local producers and suppliers as well as those at the national and international levels
- (v) To organize producer and supplier meets and trade fairs at the state, national and international level.
- (vi) To build and strengthen the state level cohesiveness of producers for increased volume and quality of produce for regional, national and state level export.
- (vii) To set up business training and incubation facilities for the purpose of promoting and assisting the local producers and entrepreneurs.
- (viii) To organise regular seminars, workshops, conferences, product displays, and other trade-related activities.
- (ix) To assist private service providers who express interest of associating with the agency or producers through the PPP mode.

Competitive Edge

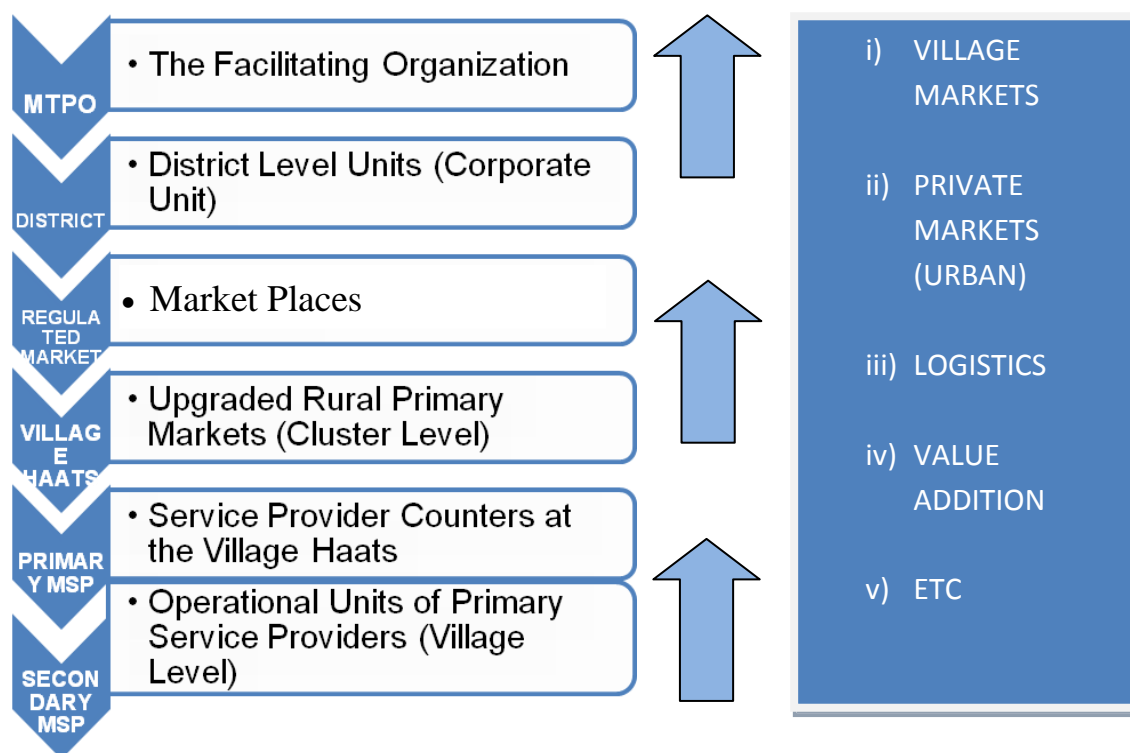
The MTPO will focus specifically on helping local producers to maximize their potential for success, combining new age technology/knowledge with traditional and existing experience and local presence.

- (i) **Focus on local producers.** Consultants will be engaged to understand the needs of the local producers/market and strategizing acceptable solutions for the same.
- (ii) **Focus on local consultants.** Personal interaction provides local producers with a level of comfort not available with remote consultants. There may be many occasions where the producers may ask the consultant to simply "stop by," to react to a new development, or to answer a question. While this local presence and personal interaction is highly valued, local producers are often unable to afford the cost associated with bringing consultants to them from other areas.
- (iii) **A diverse network of consultants and alliance partners.** Solving the unique problems that face local producers today demands a wide range of skills and experiences. By

relying on a nationally distributed talent base coordinated to work together remotely, MTPO will be able to bring together the skills required by a particular client without incurring the expense of physically bringing all of the individuals together.

- (iv) **Unique Business Model:** The unique character of the organization is that it will identify the existing players in the market but instead of looking at such players as competitors, the MTPO will try to create a win-win situation and include to an extent, the main players as the stakeholders of the organization to ensure equal opportunities and growth, especially of the local producers.

Proposed Operational Units for Market Linkage & Access



*** In-depth market research is required to understand the base for establishment of New Market Places, e.g. sectors that can be covered, etc.

As part of the Meghalaya Trade Promotion Organization's initiative, for the concept of linking rural markets to state of the art technology and infrastructure there is a need of also linking the traditionally established markets along with interventions in the form of value addition in products and services.

In order to facilitate the various interventions at the already existing village infrastructures, the MTPO realizes the relevance of upgrading these infrastructures through the concept of Village Haats at the existing traditional village markets. The concept would help introduce effective market practices, protect the economic interest of the producers/sellers, and provide value addition in products and services, as well as other benefits that would help promote trade. The Village Haats would also ensure an orderly and efficient marketing system with rationalized trade practices and procedures.

Through this concept, there would also be a system of linking producers to the value chain units and Multiple Service Providers (MSPs) based on the requirements of the producers as well as the suppliers.

Chapter VII

Development of Institutions

Under the IBDLP three institutions would be set up to further its objectives as also to maintain its essential philosophy. The institutions will not just provide the academic anchor, but also provide periodic guidance and hand holding as maybe the case.

1 Meghalaya Institute of Entrepreneurship

Under IBDLP, the Institute of Entrepreneurship has been set up to facilitate rapid economic transformation by imparting entrepreneurship education and promoting micro and small enterprises involving the youth, women and other critical target groups in the State. The Institute aims to be among the very best in the world in the area of entrepreneurship



development, model entrepreneurial services through creativity and innovation and application of skills, technological inputs for harnessing rich potential of sub sectors with focus on agriculture, horticulture, floriculture, pisciculture, aromatic and medicinal plantations, animal husbandry and other locally viable, remunerative, and income generation activities.

The objectives of setting up of the Institute of Entrepreneurship are:

- (i) To create awareness among various target groups on entrepreneurial opportunities.
- (ii) To help and assist unemployed youth-educated and uneducated, urban and rural, in acquiring skills for both wage and self employment.
- (iii) To organise vocational training for skill up-gradation including establishment of vocational training centres.
- (iv) To encourage and assist in setting up enterprises by individuals focusing on first generation entrepreneurs through appropriate trainings.

- (v) To encourage and promote research and special studies on various aspects of entrepreneurship and small and medium enterprises.
- (vi) To spread entrepreneurial education at school and college level.
- (vii) To serve as an apex regional level resource institute for accelerating the process of entrepreneurship development.
- (viii) To support and affiliate institutions/organisations in carrying out training and other entrepreneurship development related activities.
- (ix) To provide regional/national/international fora for interaction and exchange of experiences helpful for policy formulation in entrepreneurship development at various levels.

The Institute of Entrepreneurship will coordinate and support the design and implementation of State Government's Economic Reform Programme with emphasis on employment generation and inclusion. It will undertake action research, provide professional advice and conduct change management programmes for government departments and agencies to help them implement their reform agenda successfully. The Institute will work closely with policy-makers, management experts, institutions and other stakeholders, especially citizens towards ushering in an era of economic self reliance in the state and country.

2 Meghalaya Institute of Governance

An Institute of Governance has been set up as the focal institute in the State to guide governance reforms in Meghalaya, by bringing together and blending the power of knowledge, technology and people for good governance. The Institute will strive to be among the very best in the world in the area of administrative initiatives, institutional reforms and multi-stakeholder partnership to foster growth-oriented and people-centred inclusive governance.



The Institute aims to:

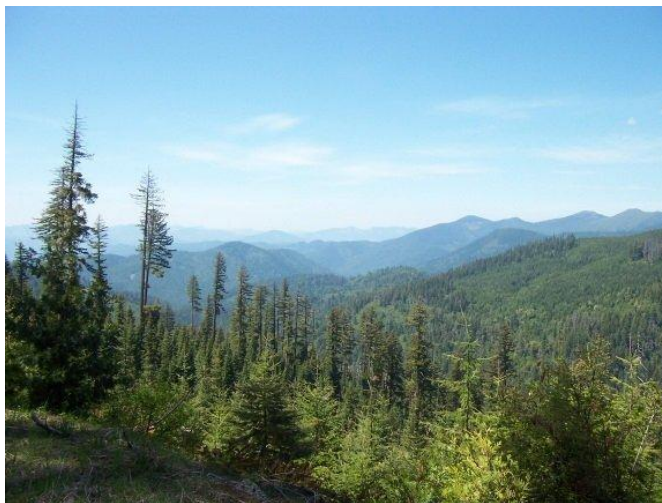
- (a) To impart information and knowledge aimed at building and promoting good governance to local level institutions/community/primary stakeholders for up scaling people's zeal in participation, ensuring sustainability of development programmes.
- (b) To provide inputs for strengthening grass root processes of democratic institutions infusing transparency and accountability in governance.

Objectives

- (i) To serve as the apex level resources institute for development of democratic governance and for ensuring impact across and among the different strata of the society.
- (ii) To work with government departments and other stakeholders to analyse key issues in governance, identify solutions, help develop action plans, and support implementation of these plans and reforms agenda.
- (iii) To act as a think tank and help translate government's goals, objectives and policy priorities and reform agenda into tangible reforms actions with focus on principles and practices of good governance.
- (iv) To create a repository of best practices, methodologies and tools in governance reforms including successful e-governance applications.
- (v) To support change management and management development programmes in government to effectively carry forward governance reforms and to develop a reform communication strategy for wider implementation.
- (vi) To undertake capacity building of stakeholders (Government and non- Government) including local governance institutions and community based organization.
- (vii) To conduct awareness building programme on the importance of good governance as the cornerstone of peace and progress in the society.
- (viii) To provide support for conflict resolutions for the community institutions.
- (ix) To provide support on empowerment for promotion of community and participatory values and ethos.

3 Meghalaya Institute of Natural Resources

Meghalaya is endowed with vast natural resources and bio-diversity. Of late, there has been largely a bypass in the judicious use of natural resources and bio-diversity affecting sustained economic growth and development. The results are increasingly explicit in terms of increasing poverty, as half of the population in the state is below the poverty line. Sustainable management



of natural resources in the given eco-system is very vital as economic development with positive growth and long term sustainability cannot thrive exploiting the natural resources-base, which is on deteriorating condition. Meghalaya, a hill state and with hilly topography and receiving good amount of rainfall would encourage degradation and soil erosion if natural resources are not protected, conserved and managed properly. Impaired soil health, siltation of water bodies and accelerated surface water runoff, etc further leads to decline in land and water productivity. This situation further gets compounded in the event of impending climate change which will have negative impact on the economic growth and overall development of the State. It is therefore required to have a holistic solution to the existing problems as well as to the emerging problems which is the need of the hour. In this regard there is a strong need to equip man power with sufficient knowledge and skill in natural resources management who would be the natural resources managers and volunteers to disseminate information about the different aspects concerning natural resources protection and conservation etc for the different stakeholders and users particularly the rural farming communities.

Conservation is the key to sustainable development. Development involves the use of natural resources whereas; conservation helps in ensuring sustainability of development for the present without foreclosing the options/opportunities for the generation to come.

The proposed Institute of Natural Resource Management is, therefore, an attempt to address the issues concerning to the sustainability of natural resources by strengthening the

capacity for need based research, human resource development and knowledge dissemination on NATURAL RESOURCE MANAGEMENT. The Institute would provide the state of art utilising information technology tools, remote sensing tools, GIS PLATFORM, Geo-spatial technology for evolving natural resource management plan by integrating conventional methods together with traditional conservation knowledge.

The Institute of Natural Resource Management would also be the convergence platform where the concerned line departments of Soil and Water Conservation, Forest and Environment, Livestock, Fisheries, Agriculture, Horticulture, Sericulture, Village and Khadi Industries and Rural Development form the key players. This Institute would provide integrated and co-ordinated management of natural resources as the cutting edge for all other line departments.

The vision of the Institute is “To enrich knowledge and value added training and human development, for sustainable management of natural resources to achieve sustainable economic growth and development in the State”.

Mission

- (i) To generate trained manpower to undertake and manage natural resources in a more effective and sustainable manner.
- (ii) To serve as centre of excellence in frontier areas of natural resources management and for servicing training of the different levels of natural resources managers and extension workers as services providers for natural resources planning, conservation and management.
- (iii) To strengthen the knowledge and skill of the grass root level stakeholders for sustainable utilization of natural resources base.
- (iv) To develop entrepreneurship based on locally available natural resource without deteriorating its base/stock.

Chapter VIII

Administrative Arrangements

The programme will be managed with the help of the following units:

1. **Basin Development Council (BDC)** headed by the Chief Minister to drive initiatives with regards to policy planning and coordination, innovation, resource mobilization, and synergizing the efforts of various stakeholders along with any other measure that may be considered necessary by the council from time to time for successful implementation of the programme. The council will include the Chief Executive Members of Autonomous District Councils
2. **Basin Development Authority (BDA)** under the chairmanship of the Chief Secretary to steer the implementation of the programme, the Authority will include the Secretaries of Autonomous District Councils.
3. **Basin Development Unit (BDU)** will function as the district chapter of BDA to manage the affairs of the programme. It will be headed by the Deputy Commissioner of the concerned district. The Unit will be supported with a full time Project Manager and subject matter specialists (SMS).
4. **Entrepreneurs.** Village/Clusters in different basin areas will be encouraged to form activity groups to undertake natural resources management related activities under the programme, agriculture and allied extension services, value-chains services, enterprises, business and market services etc.
5. Line departments and agencies will be the implementing agencies for undertaking the projects at various stages.

Chapter IX

Conclusion

The IBDLP is essentially an enabling framework that approaches development from a fresh perspective. It seeks to empower the people with a genuine concern for the overall well being with convergence as its core strategy and water at the heart of most of its interventions, the IBDLP seeks to make a critical difference to the way models of development and governance are understood and followed in our country. Through its interventions, it is hoped that the following outcomes would result.

1. **Integrated Village Development through Sustainable NRM.** The programme will aim at village level economic development by generating additional incomes and more job opportunities. Integrated watershed management, Skills formation and JFM are essential mechanisms for developing the use and modification of natural resources, conservation has to ensure the sustainability of development for the present and in the future. The NRM plan will serve as a management guide for integrating environmental concerns with development imperatives and linking with economic development.
2. **Fostering Linkages.** Efforts in the primary sector will be supplemented by strengthening of micro enterprises for value addition to the local products and their marketing. The existing leakages in value addition and marketing will be identified and the potential of clusters will be exploited to maximize the development. Development of clusters and working through will be the methodology adopted. Entrepreneurial skills of the cluster groups will be developed through various capacity building programmes.
3. **Reaching the unreached.** Social inclusion will be an in-built methodology adopted. While attempting to bring about local economic development, social justice would be the overriding principle. The inclusion of socially and economically marginalized and excluded groups in the development process is very much a part of the envisaged outcomes of the IBDLP.

4. **Developing the human resources.** Human Resource Development with emphasis on last mile training to bridge the employment gap, which could tap the opportunities in the growing tertiary sector, would be an outcome.
5. **Paradigm shift from beneficiaries to entrepreneurs.** Interventions under the programme will be geared up as an integrated support service in the nature of comprehensive facilitation of enterprise development from concept to commissioning and not as one time piece meal benefit, operating in silos. This will pave the way for greater involvement of the participants in the ventures, both individually and collectively.
6. **Good governance for better quality of public services.** The good governance plan put in place for ensuring transparency and also effectiveness in delivery of services to the common man will help increase the people's participation, maintenance of records and accounts, transparency and procedure disclosure. Better reach out through proper extension system, and improving the efficiency of officials and better community based monitoring are the outcomes of this initiative.
7. **Duplication of works of the different departments will have been avoided.** Critical gaps in funding and management would have been bridged.
8. **Sustainable growth ensured.** Livelihood opportunities to provide water security, food security and health security, especially to the rural and underprivileged people of the state will be provided.

Resources Investments

The resources and investments required for effective implementation of the programme will be mobilized under schemes of State Government, Central Government, International organisations, multi-lateral institutions and community-contribution. Efforts will be made for encouraging pooling in of investments and funding of viability gaps in common and joint liability projects.

Monitoring and Evaluation

Assessment of baselines, effective concurrent evaluation and end of the project impact assessment will be ensured. Social audit as well as web-enabled Information Sharing Mechanism will be promoted.

The IBDLP is a first of its kind programme being launched by the State of Meghalaya to achieve the integration of public programme and service delivery within the sustainability framework, so that the value maximization takes place within the same natural and financial resources. The outcomes of better governance and better management of natural resources will help the State become progressive and enlightened in its functioning. People would build their own capacities to make rational and more environmentally responsible choices. The net effect of this programme would be difficult to quantify at this stage, especially because it has both the tangible and the intangible components but both are highly valuable and sustaining. And, quite understandably the programme will evolve in due course of time as the experience will keep enriching it.

List of abbreviations used

1.	AIBP	:	Accelerated Irrigation Benefit Programme
2.	ATMA	:	Agricultural Technology Management Agency
3.	BRGF	:	Backward Region Grant Fund
4.	DONER	:	Development Of North Easter Region
5.	FDA	:	Farmers Development Agency
6.	GIS	:	Geographical Information System
7.	IAY	:	.Indira Awaaz Yojana
8.	ICT	:	Information and Communication Technology
9.	IWDP	:	Integrated Wasteland Development Project
10.	IWMP	:	Integrated Watershed Management Programme
11.	JFM	:	Joint Forest Management
12.	JFMC	:	Joint Forest Management Committee
13.	MICE	:	Meetings, Incentives, Conferencing, Exhibitions
14.	MNREGS	:	Mahatma Gandhi National Rural Employment Guarantee Scheme
15.	MORD	:	Ministry Of Rural Development
16.	NABARD	:	National Agricultural Bank and Rural Development
17.	NEC	:	North Eastern Council
18.	NHM	:	National Horticulture Mission
19.	NWDPRA	:	National Watershed Development Project in Rainfed Areas
20.	PMGSY	:	Pradhan Mantri Gram Sadak Yojana
21.	PPP	:	Public Private Partnership
22.	RD and PR	:	Rural Development and Panchayati Raj

23.	RIDF	:	Rural Infrastructure Development Fund
24.	RKVY	:	Rashtriya Krishi Vikas Yojana
25.	RRR	:	Repair, Renovation and Restoration
26.	RSVY	:	Rashtriya Sam Vikas Yojana
27.	SGSY	:	Swarnjayanti Gram Swarozgar Yojana
28.	SHG	:	Self Help Groups
29.	WDPSA	:	Watershed development Project in Shifting Cultivation Areas